

LEHI CITY

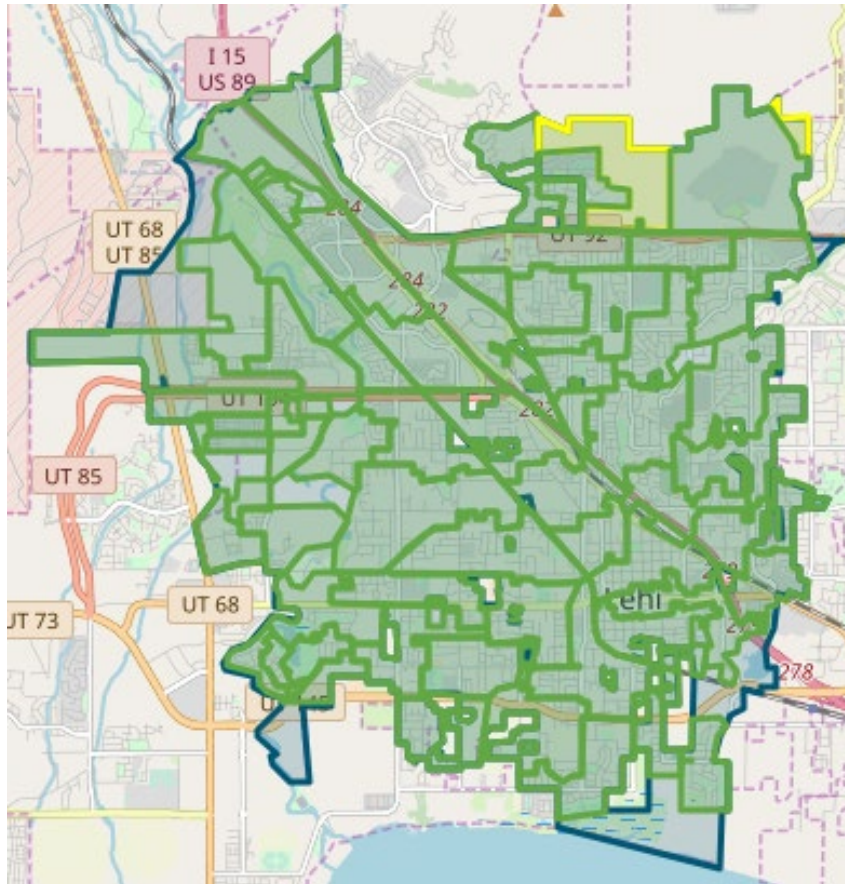
FIBER NETWORK MONTHLY UPDATE

December 31, 2025





LEHI FIBER TO MY CITY MAP



- Lehi City
- Construction in Progress
- Fiber Ready – Contact ISP

PROJECT OVERVIEW

NOTICE TO PROCEED

17 May 2022

DEMAND AGGREGATION LAUNCH

8 July 2022

GROUNDBREAKING CEREMONY

6 September 2022

SUBSTANTIAL COMPLETION

12 August 2025

COMPLETED BORING

386,196 feet

COMPLETED MICROTRENCHING

220,902 feet

COMPLETED FIBER PLACEMENT

2,174,257 feet

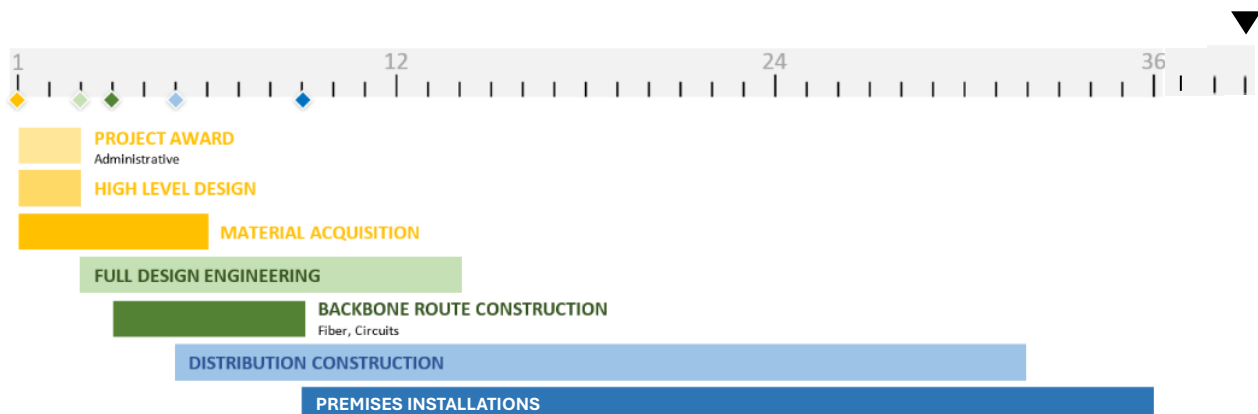
EXISTING CONDUIT UTILIZED

820,997 feet

AERIAL INSTALLATION

15155,085 feet

36-MONTH PROJECT TIMELINE





NETWORK OPERATIONS

NETWORK AREA CLOSE OUT

The Lehi Fiber team and Strata are working on construction punch lists, completion checklists, and details to complete and closeout cabinet and Network Areas. Once cabinet and network areas are fully complete and closed out, Lehi City will obtain ownership of those portions of the network. Customer signups and associated work that will occur after an area has been closed out will transition to network operations. The ability to sign up for service on the network does not change due to the close out and ownership transition of a network area to Lehi City. Once an area is opened for customer orders the sign-up process workflows and systems do not change.

NETWORK OPERATIONS

Strata and Lehi City have been working on providing fiber for new developments where new locations need to have broadband services available. These new developments, and the expansion of the Lehi Fiber Network, are being integrated into existing areas of the network. There are approximately 235 new locations, within new developments, that have been integrated into the network, and that can sign up for services.

ENGINEERING and CONSTRUCTION

RING AND DISTRIBUTION FIBER CONSTRUCTION

Strata, Lehi City, and Union Pacific Railroad are finalizing the documentation for the permit within Cabinet 11. Strata is beginning the process of scheduling construction for the crossing. We are anticipating that this small area will be completed within 30 days of receiving the permit.

CUSTOMER INSTALLATIONS

Fiber splicing and testing is being finalized in the last cabinet areas. City locations such as parks, water, and other similar locations are in the process of being connected to the network.

CUSTOMER INSTALLATIONS

	TOTAL NUMBER OF CUSTOMER SIGN-UPS	NUMBER OF LOCATIONS WITH FIBER AVAILABLE	SUBSCRIBED CUSTOMER PERCENTAGE
CURRENT TOTALS:	6189	22992	27%



MARKETING/PUBLIC RELATIONS

SOCIAL AND DIGITAL MARKETING CAMPAIGNS

Strata is working closely with Lehi City on strategy development and content planning for seasonal and educational campaigns. These efforts align with the Q1 advertising strategy, which builds on awareness by emphasizing fiber education and persuasion. Messaging will clearly communicate the network's value and guide residents and businesses on how to choose a provider.

CUSTOMER SATISFACTION

Our Marketing team is continuing to partner with Lehi City on collateral and outreach pieces designed to build awareness and support adoption of the new network. Below are the Net Promoter Scores from November's surveys (rated on a scale of -100 to 100):

- Following Installation: **72**
- After 6 Months: **50**