

# LEHI CITY

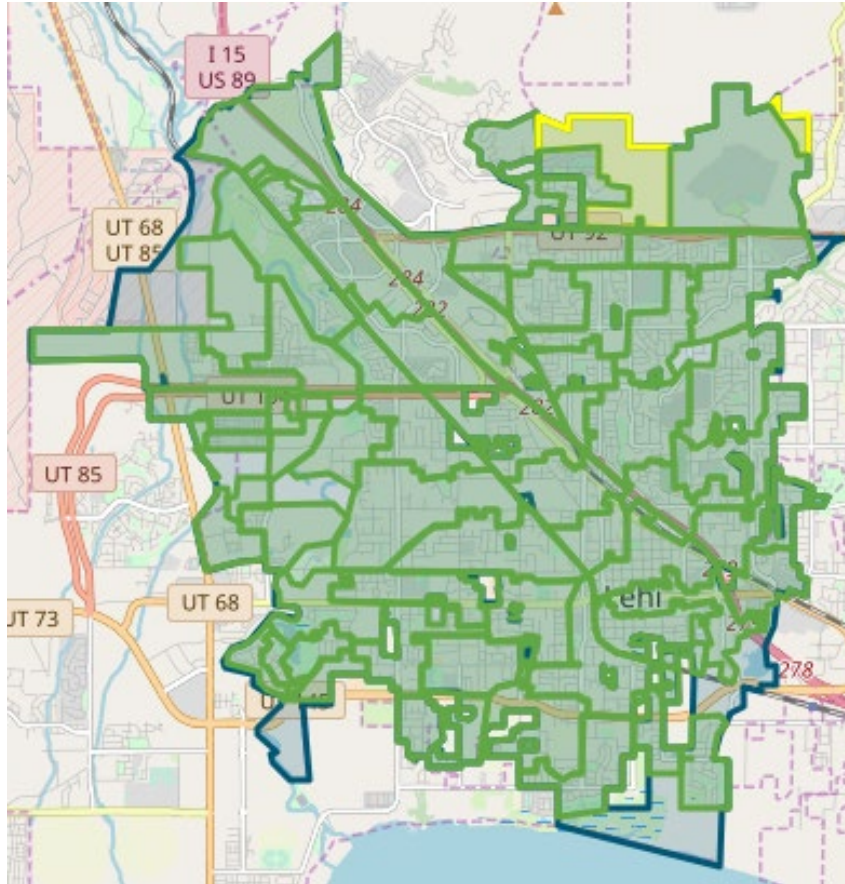
## FIBER NETWORK MONTHLY UPDATE

November 26, 2025





## LEHI FIBER TO MY CITY MAP



- Lehi City
- Construction in Progress
- Fiber Ready – Contact ISP

## PROJECT OVERVIEW

### NOTICE TO PROCEED

17 May 2022

### DEMAND AGGREGATION LAUNCH

8 July 2022

### GROUNDBREAKING CEREMONY

6 September 2022

### SUBSTANTIAL COMPLETION

12 August 2025

### COMPLETED BORING

386,196 feet

### COMPLETED MICROTRENCHING

220,902 feet

### COMPLETED FIBER PLACEMENT

2,172,890 feet

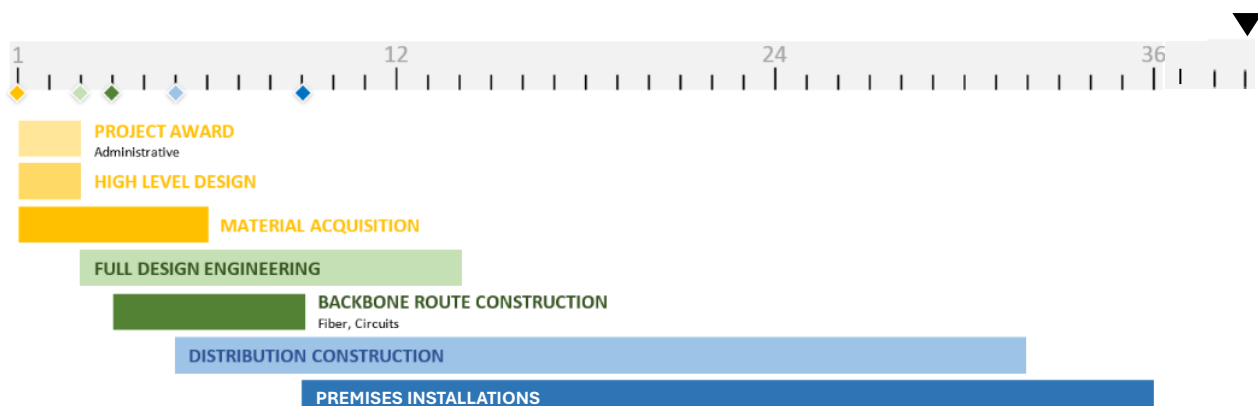
### EXISTING CONDUIT UTILIZED

820,997 feet

### AERIAL INSTALLATION

153,767 feet

## 36-MONTH PROJECT TIMELINE





## NETWORK OPERATIONS

### NETWORK AREA CLOSE OUT

The Lehi Fiber team and Strata are working on construction punch lists, completion checklists, and details to complete and closeout cabinet and Network Areas. Once cabinet and network areas are fully complete and closed out, Lehi City will obtain ownership of those portions of the network. Customer signups and associated work that will occur after an area has been closed out will transition to network operations. The ability to sign up for service on the network does not change due to the close out and ownership transition of a network area to Lehi City. Once an area is opened for customer orders the sign-up process workflows and systems do not change.

### NETWORK OPERATIONS

Strata and Lehi City have been working on providing fiber for new developments where new locations need to have broadband services available. These new developments, and the expansion of the Lehi Fiber Network, are being integrated into existing areas of the network. There are approximately 235 new locations, within new developments, that have been integrated into the network, and that can sign up for services.

## ENGINEERING and CONSTRUCTION

### RING AND DISTRIBUTION FIBER CONSTRUCTION

Strata applied for a Union Pacific Railroad permit for the alternate crossing in Cabinet 11. Once a UPR permit is obtained, construction will be completed. We are anticipating that this small area will be completed within 30 days of receiving a UPR permit.

### CUSTOMER INSTALLATIONS

Fiber splicing and testing is being finalized in the last cabinet areas. City locations such as parks, water, and other similar locations are in the process of being connected to the network.

## CUSTOMER INSTALLATIONS

	TOTAL NUMBER OF CUSTOMER SIGN-UPS	NUMBER OF LOCATIONS WITH FIBER AVAILABLE	SUBSCRIBED CUSTOMER PERCENTAGE
CURRENT TOTALS:	6,050	22,992	26%



## MARKETING/PUBLIC RELATIONS

### WEBSITE ENHANCEMENTS

The new Lehi City website is nearing completion. Strata has the API ready to integrate with the site's upcoming address search feature, allowing customers to easily check service availability once the tool goes live.

### CUSTOMER SATISFACTION

Our Marketing team is continuing to partner with Lehi City on collateral and outreach pieces designed to build awareness and support adoption of the new network. Below are the Net Promoter Scores from October's surveys (rated on a scale of -100 to 100):

- Following Installation: **73**
- After 6 Months: **48.09**