

LEHI CITY

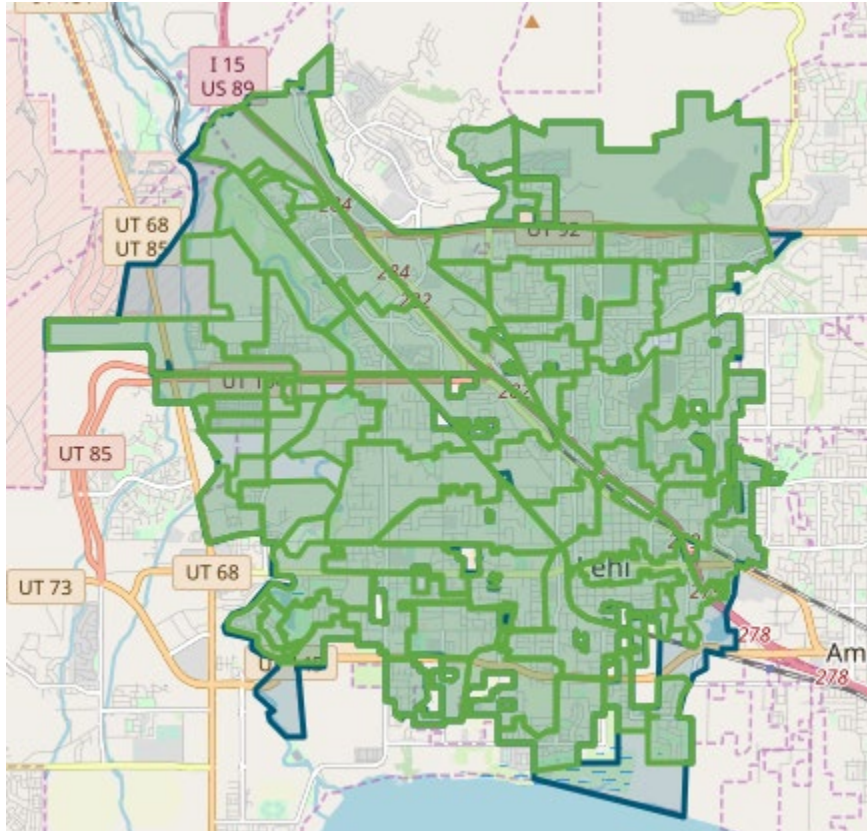
FIBER NETWORK MONTHLY UPDATE

September 24, 2025





LEHI FIBER TO MY CITY MAP



- Lehi City
- Construction in Progress
- Fiber Ready – Contact ISP

PROJECT OVERVIEW

NOTICE TO PROCEED

17 May 2022

DEMAND AGGREGATION LAUNCH

8 July 2022

GROUNDBREAKING CEREMONY

6 September 2022

SUBSTANTIAL COMPLETION

12 August 2025

COMPLETED BORING

386,162 feet

COMPLETED MICROTRENCHING

219,416 feet

COMPLETED FIBER PLACEMENT

2,171,970 feet

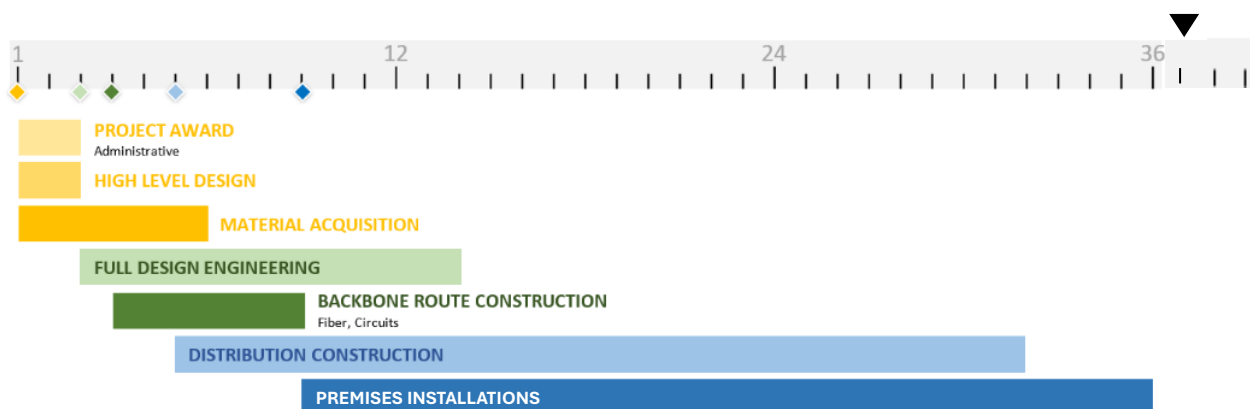
EXISTING CONDUIT UTILIZED

820,997 feet

AERIAL INSTALLATION

153,767 feet

36-MONTH PROJECT TIMELINE





NETWORK OPERATIONS

NETWORK AREA CLOSE OUT

The Lehi Fiber team and Strata are working on construction punch lists, completion checklists, and details to complete and closeout cabinet and Network Areas. Once cabinet and network areas are fully complete and closed out, Lehi City will obtain ownership of those portions of the network. Customer signups and associated work that will occur after an area has been closed out will transition to network operations. The ability to sign up for service on the network does not change due to the close out and ownership transition of a network area to Lehi City. Once an area is opened for customer orders the sign-up process workflows and systems do not change.

NETWORK OPERATIONS

Strata and Lehi City have been working on providing fiber for new developments where new locations need to have broadband services available. These new developments, and the expansion of the Lehi Fiber Network, are being integrated into existing areas of the network. There are approximately 200 new locations, within new developments, that have been integrated into the network, and that can sign up for services.

ENGINEERING and CONSTRUCTION

RING AND DISTRIBUTION FIBER CONSTRUCTION

Strata and Lehi City are continuing to work on the Cabinet 11 alternate route so that fiber can be installed within a small area of that cabinet. Once the solution is finalized and permits are obtained, construction will be completed. We are anticipating that this small area will be completed within 30 days of receiving all necessary permits.

CUSTOMER INSTALLATIONS

All cabinet areas are now taking orders for new services. Fiber splicing and testing is being finalized in the last cabinet areas.

Major city locations and substations have all been connected to the fiber network. Additional parks, city water, and other similar locations are in the process of being connected to the network.

CUSTOMER INSTALLATIONS

	TOTAL NUMBER OF CUSTOMER SIGN-UPS	NUMBER OF LOCATIONS WITH FIBER AVAILABLE	SUBSCRIBED CUSTOMER PERCENTAGE
CURRENT TOTALS:	5,613	22,992	24%



MARKETING/PUBLIC RELATIONS

WEBSITE ENHANCEMENTS

Strata is working with Lehi City to make improvements to lehifibernetwork.gov. that will more easily allow customers to see if service is available at their location, rather than through accessing lehi.fibertomycity.com.

CUSTOMER SATISFACTION

Strata's marketing team continues to monitor customer satisfaction at various points, including post-installation, four weeks following activation, and after using the service for six months. August's surveys report the following Net Promoter Scores, which is a metric measured on a scale of -100 to 100:

- Following Installation: **73**
- After 4 Weeks: **56**
- After 6 Months: **48.44**