

LEHI CITY

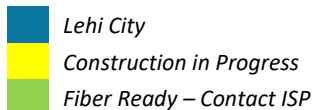
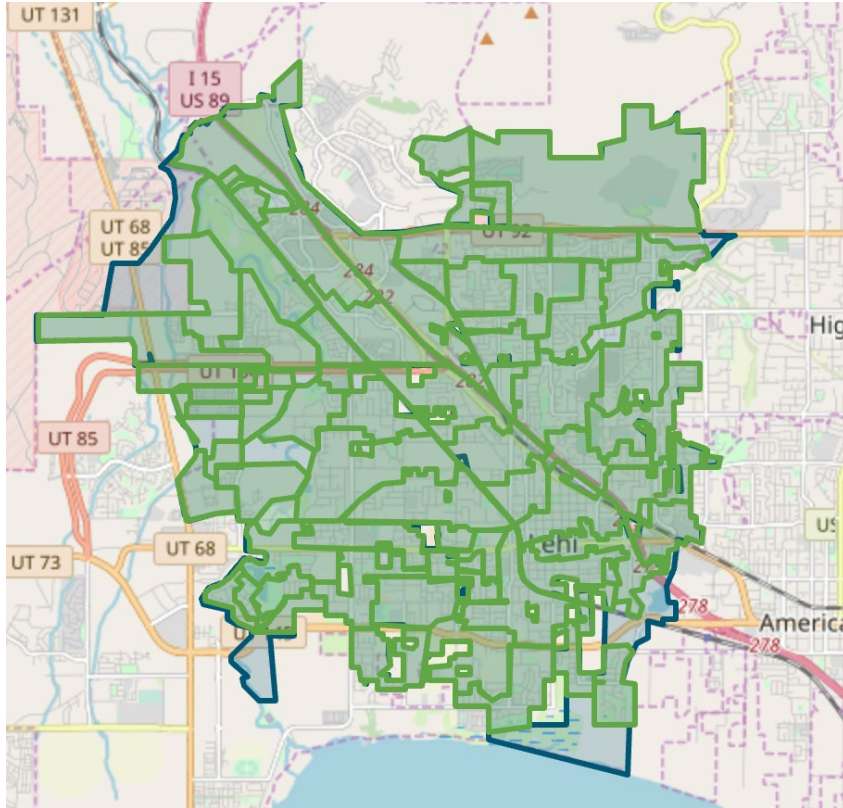
FIBER NETWORK MONTHLY UPDATE

August 27, 2025





LEHI FIBER TO MY CITY MAP



PROJECT OVERVIEW

NOTICE TO PROCEED

17 May 2022

DEMAND AGGREGATION LAUNCH

8 July 2022

GROUNDBREAKING CEREMONY

6 September 2022

SUBSTANTIAL COMPLETION

12 August 2025

COMPLETED BORING

385,654 feet

COMPLETED MICROTRENCHING

218,151 feet

COMPLETED FIBER PLACEMENT

2,170,769 feet

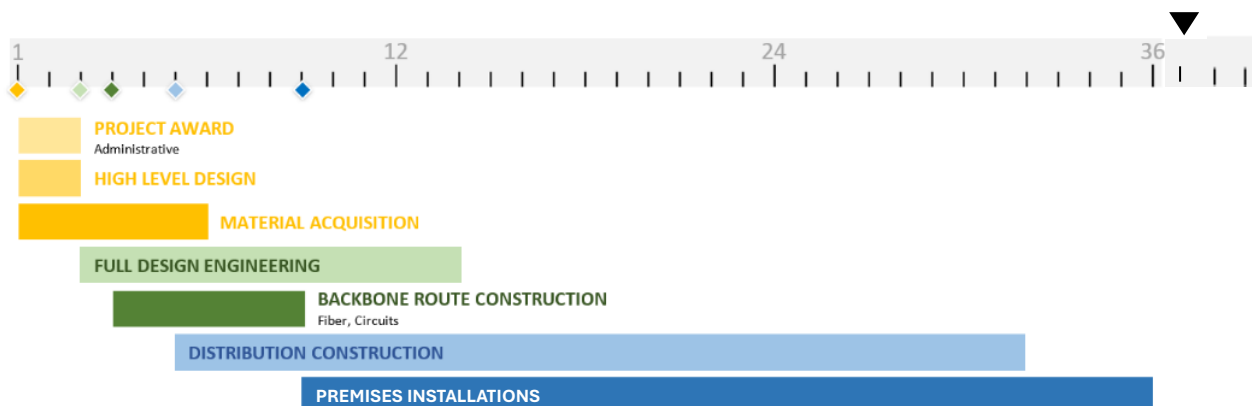
EXISTING CONDUIT UTILIZED

820,997 feet

AERIAL INSTALLATION

153,767 feet

36-MONTH PROJECT TIMELINE





NETWORK OPERATIONS and NETWORK AREA CLOSE OUT

The Lehi Fiber team and Strata are working on construction punch lists, completion checklists, and details to complete and closeout cabinet and Network Areas. Once cabinet and network areas are fully complete and closed out, Lehi City will obtain ownership of those portions of the network. Customer signups and associated work that will occur after an area has been closed out will transition to network operations. The ability to sign up for service on the network does not change due to the close out and ownership transition of a network area to Lehi City. Once an area is opened for customer orders the sign-up process workflows and systems do not change.

ENGINEERING and CONSTRUCTION

RING AND DISTRIBUTION FIBER CONSTRUCTION

We were unable to find a viable economic solution for the Cabinet 11 proposed Union Pacific Railroad crossing. Strata and Lehi City are working together on an alternate solution to provide the necessary route so that fiber can be installed in this small area. Once the solution is finalized and permits are obtained, construction will be completed. We are anticipating that this small area will be completed within 30 days of receiving all necessary permits.

CUSTOMER INSTALLATIONS

All cabinet areas are now taking orders for new service. Fiber splicing and testing is being finalized in the last cabinet areas.

City locations are being installed once construction in the cabinet area is complete and orders for new service connections are made available.

CUSTOMER INSTALLATIONS

	TOTAL NUMBER OF CUSTOMER SIGN-UPS	NUMBER OF LOCATIONS WITH FIBER AVAILABLE	SUBSCRIBED CUSTOMER PERCENTAGE
CURRENT TOTALS:	5,477	22,992	24%

MARKETING/PUBLIC RELATIONS

WEBSITE ENHANCEMENTS

Strata is working with Lehi City to make improvements to lehifibernetwork.gov. that will more easily allow customers to see if service is available at their location, rather than through accessing lehi.fibertomycity.com.



CUSTOMER SATISFACTION

Strata's marketing team continues to monitor customer satisfaction at various points, including post-installation, four weeks following activation, and after using the service for six months. July's surveys report a Net Promoter Score of **51.46**, on a scale of -100 to 100.