

LEHI CITY

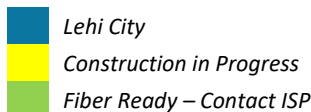
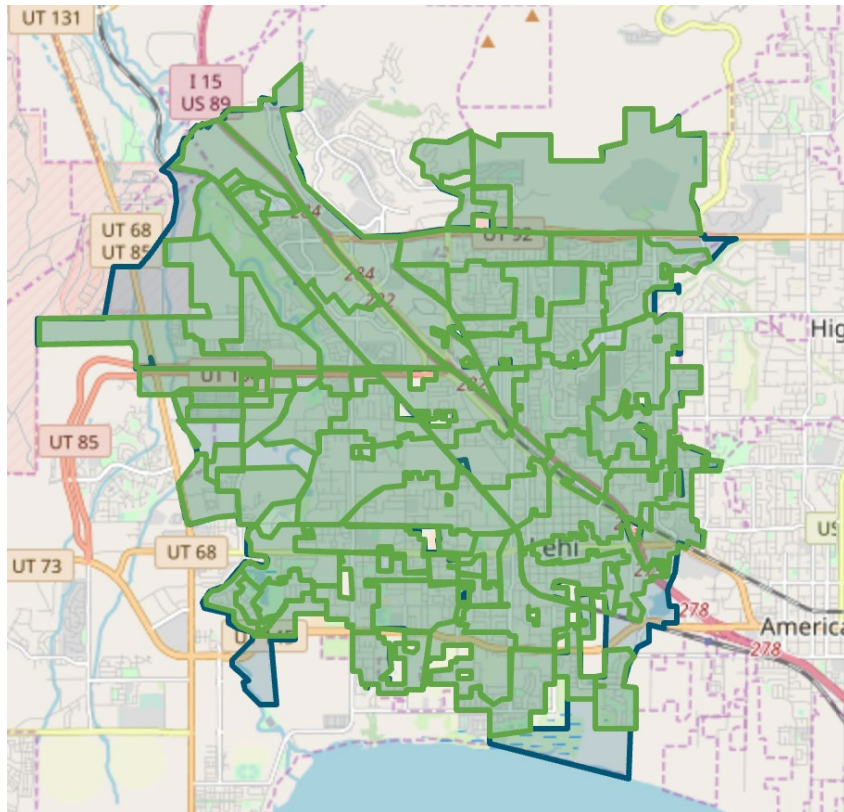
FIBER NETWORK MONTHLY UPDATE

July 30, 2025





LEHI FIBER TO MY CITY MAP



PROJECT OVERVIEW

NOTICE TO PROCEED

17 May 2022

DEMAND AGGREGATION LAUNCH

8 July 2022

GROUNDBREAKING CEREMONY

6 September 2022

SUBSTANTIAL COMPLETION

12 August 2025

COMPLETED BORING

385,545 feet

COMPLETED MICROTRENCHING

217,972 feet

COMPLETED FIBER PLACEMENT

2,169,244 feet

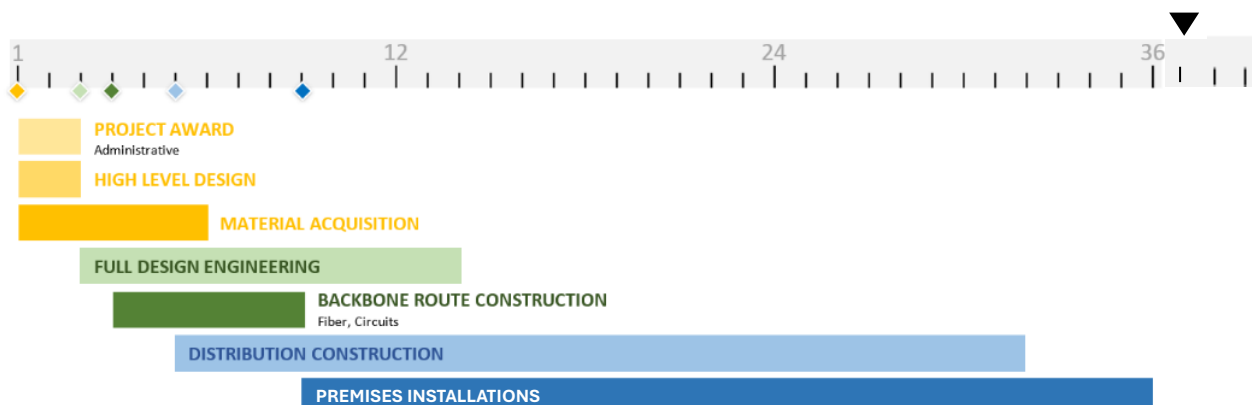
EXISTING CONDUIT UTILIZED

820,849 feet

AERIAL INSTALLATION

153,767 feet

36-MONTH PROJECT TIMELINE





NETWORK OPERATIONS and NETWORK AREA CLOSE OUT

Strata Networks and Lehi City are working together to complete planning and fiber designs for Lehi Fiber facilities as part of new upcoming development projects that are within the city limits. Planning and care are provided so that these new developments can be integrated into the existing Lehi Fiber network systems under construction. When construction within a new development is completed, customers can sign up for services.

The Lehi Fiber team and Strata are working on construction punch lists, completion checklists, and details to complete and closeout cabinet and Network Areas. Once cabinet and network areas are fully complete and closed out, Lehi City will obtain ownership of those portions of the network. Customer signups and associated work that will occur after an area has been closed out will transition to network operations. The ability to sign up for service on the network does not change due to the close out and ownership transition of a network area to Lehi City. Once an area is opened for customer orders the sign-up process workflows and systems do not change.

ENGINEERING and CONSTRUCTION

RING AND DISTRIBUTION FIBER CONSTRUCTION

Nearly all customers in Cabinet 11 are currently able to sign up for services. Strata and Lehi City are continuing to work with Union Pacific and review alternate solutions to provide a necessary route so that fiber can be installed to a small area within cabinet 11. Once a permit is obtained or an alternate route is selected, construction will be completed. We are anticipating that this small area will be completed by the contractual completion date.

CUSTOMER INSTALLATIONS

All cabinet areas are now taking orders for new service. Fiber blowing and fiber splicing is being completed in the last cabinet areas.

City locations are being installed once construction in the cabinet area is complete and orders for new service connections are made available.



CUSTOMER INSTALLATIONS

	Total Number of Customer Sign-ups	Number of Locations with Fiber Available	Subscribed Customer Percentage
Current Totals:	5,312	23,354	23%

MARKETING/PUBLIC RELATIONS

DEMAND AGGREGATION

As of July 28, 2025, the demand aggregation platform reached a total of **10,778** unique addresses registered within city limits.

ANNUAL SURVEY

Our team is analyzing responses from the Lehi Fiber Network Annual Survey and finalizing a summary.