

# LEHI CITY

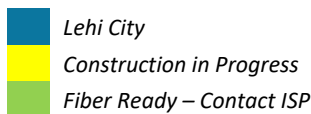
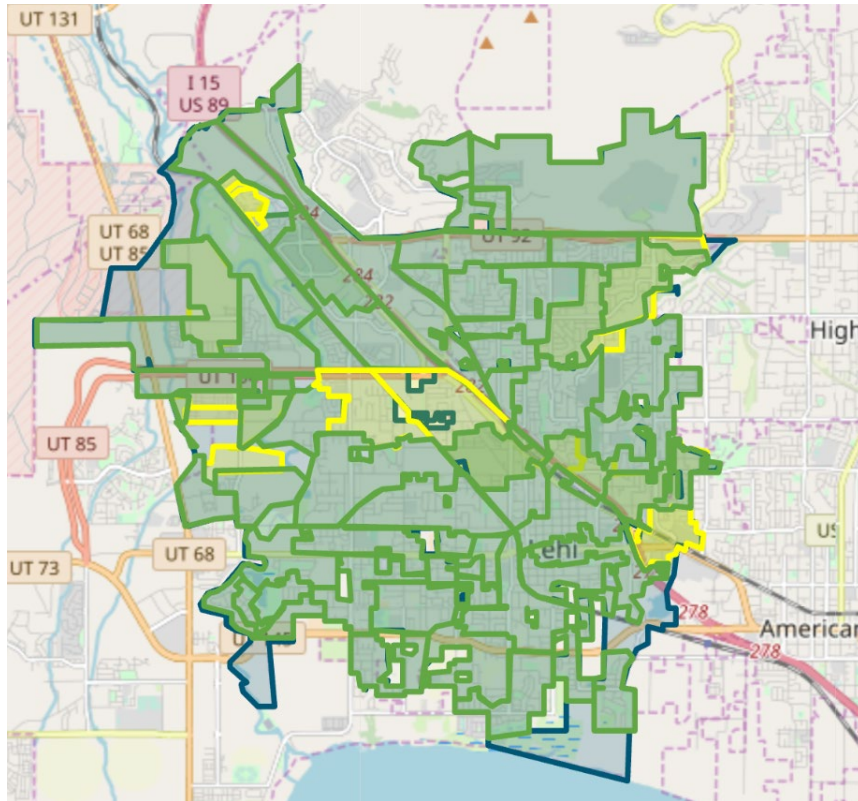
## FIBER NETWORK MONTHLY UPDATE

May 28, 2025





## LEHI FIBER TO MY CITY MAP



## PROJECT OVERVIEW

### NOTICE TO PROCEED

17 May 2022

### DEMAND AGGREGATION LAUNCH

8 July 2022

### GROUNDBREAKING CEREMONY

6 September 2022

### SUBSTANTIAL COMPLETION

12 August 2025

### COMPLETED BORING

384,048 feet

### COMPLETED MICROTRENCHING

192,931 feet

### COMPLETED FIBER PLACEMENT

2,164,045 feet

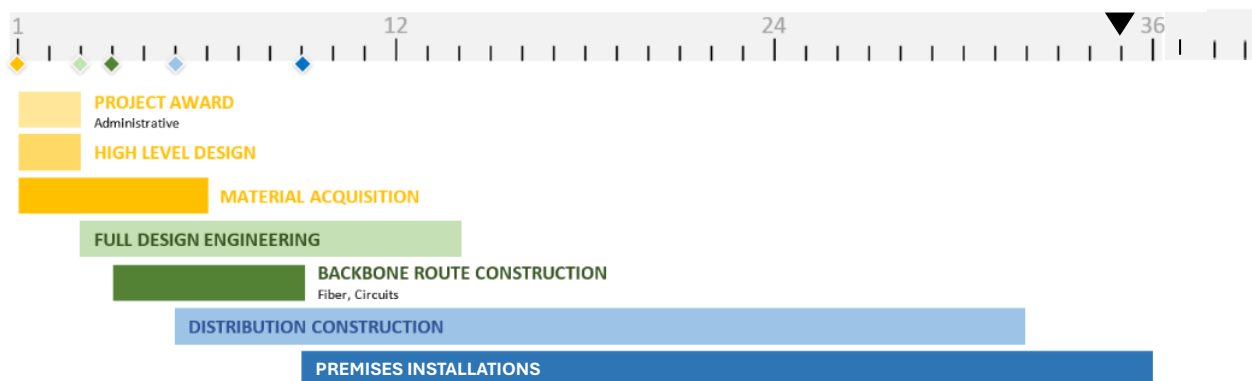
### EXISTING CONDUIT UTILIZED

819,790 feet

### AERIAL INSTALLATION

149,943 feet

## 36-MONTH PROJECT TIMELINE





## NETWORK OPERATIONS and NETWORK AREA CLOSE OUT

Strata Networks and Lehi City are working together to complete planning and fiber designs for Lehi Fiber facilities as part of new upcoming development projects that are within the city limits. Planning and care are provided so that these new developments can be integrated into the existing Lehi Fiber network systems under construction. When construction within a new development is completed, customers can sign up for services. New developments located within existing cabinet areas 10A, 17, 35, 8, 5, and 7 have been completed, such that customers may sign up for new services.

The Lehi Fiber team and Strata are working on construction punch lists, completion checklists, and details to complete and closeout cabinet and Network Areas. Once cabinet and Network Areas are fully complete and closed out, Lehi City will obtain ownership of those portions of the network. Customer signups and associated work that will occur after an area has been closed out will transition to network operations. The ability to sign up for service on the network does not change due to the close out and ownership transition of a network area to Lehi City. Once an area is opened for customer orders the sign-up process workflows and systems do not change.

## ENGINEERING and CONSTRUCTION

### RING AND DISTRIBUTION FIBER CONSTRUCTION

- Construction for **cabinets 26, 24, 20B, 23, 25, and 43** are in progress. Once construction is complete and fiber is placed, all locations within these cabinet boundaries may receive service. Notifications to the citizens informing them of service availability will be given at that time.
- Construction for several cabinets are being completed. Fiber blowing and splicing has begun. These cabinets will be taking customer orders in the upcoming weeks. We are anticipating a cabinet being completed and ready for new customer orders about every week until the completion of the project.

### CUSTOMER INSTALLATIONS

**Cabinet Areas 5, 18, 7, 9, 8, 4A, 4B, 10A, 10B, 17, 2, 13A, 13B, 3A, 3B, 21, 34, 37B, 35, 31, 30, 11, 1B, 38, 39, 37A, 1A, 36A, 36B, 32, 33, 19, 26, 41, 14B, 16A, 24, 27B, 6, 27A, 28B, 28A, 14A, 33N, 12, 15A, 15B, 42, 20B, 29A, and 40** are currently taking orders for new service. Customers within additional cabinet areas will be available once construction, fiber blowing, and fiber splicing are completed. This month the project achieved the milestone of having 20,000 locations with fiber available.

City locations are being installed once construction in the cabinet area is complete and orders for new service connections are made available.



## CUSTOMER INSTALLATIONS

	Total Number of Customer Sign-ups	Number of Locations with Fiber Available	Subscribed Customer Percentage
CURRENT TOTALS	4,716	20,903	23%

## MARKETING/PUBLIC RELATIONS

### DEMAND AGGREGATION

As of May 22, 2025, the demand aggregation platform reached a total of **10,502** unique addresses registered within city limits.

### ANNUAL SURVEY

Our team is actively collecting responses on the Lehi Fiber Network Annual Survey. This survey aims to gather valuable customer feedback and identify opportunities to improve and enhance the network.

### ONGOING MARKETING SUPPORT

Our team continues to work closely with Lehi City to provide various marketing support and assets, including flyers, digital ads, emails, and more!