

LEHI CITY

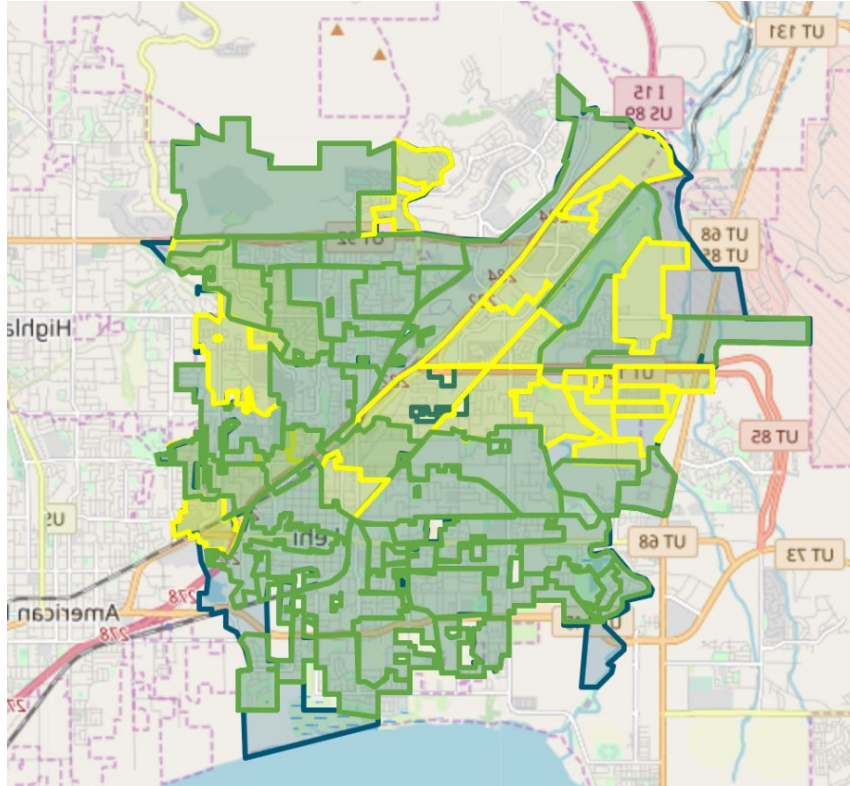
FIBER NETWORK MONTHLY UPDATE

February 26, 2025





LEHI FIBER TO MY CITY MAP



- Lehi City
- Construction in Progress
- Fiber Ready – Contact ISP

PROJECT OVERVIEW

NOTICE TO PROCEED

17 May 2022

DEMAND AGGREGATION LAUNCH

8 July 2022

GROUNDBREAKING CEREMONY

6 September 2022

SUBSTANTIAL COMPLETION

26 July 2025

COMPLETED BORING

309,597 feet

COMPLETED MICROTRENCHING

177,735 feet

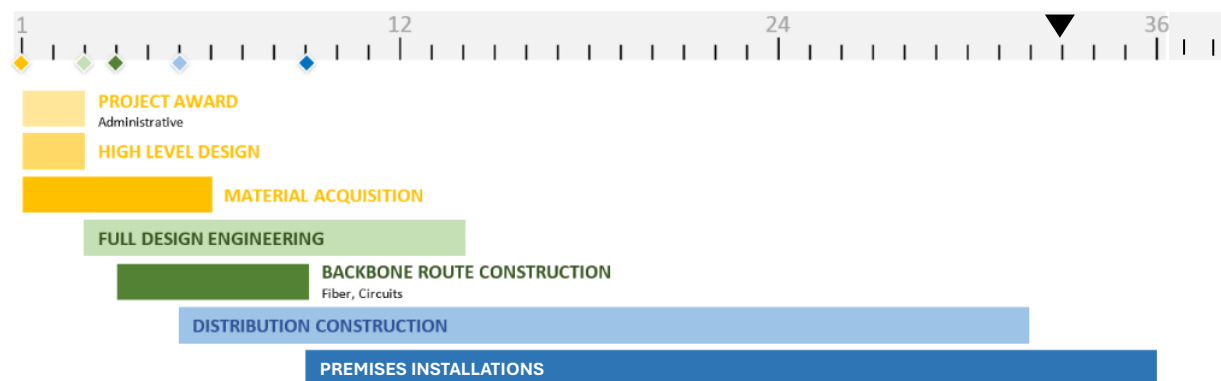
COMPLETED FIBER PLACEMENT

2,150,651 feet

EXISTING CONDUIT UTILIZED

775,121 feet

36-MONTH PROJECT TIMELINE





NETWORK OPERATIONS and NETWORK AREA CLOSE OUT

Strata Networks and Lehi City are working together to complete planning and fiber designs for Lehi Fiber facilities as part of new upcoming development projects that are within the city limits. Planning and care are provided so that these new developments can be integrated into the existing Lehi Fiber network systems under construction. When construction within a new development is completed, customers can sign up for services. New developments located within existing cabinet areas 10A, 17, and 35 have been completed, such that customers may sign up for new services.

The Lehi Fiber team and Strata are working on construction punch lists, completion checklists, and details to complete and closeout cabinet and Network Areas. Once cabinet and Network Areas are fully complete and closed out, Lehi City will obtain ownership of those portions of the network. Customer signups and associated work that will occur after an area has been closed out will transition to network operations. The ability to sign up for service on the network does not change due to the close out and ownership transition of a network area to Lehi City. Once an area is opened for customer orders the sign-up process workflows and systems do not change.

ENGINEERING and CONSTRUCTION

RING AND DISTRIBUTION FIBER CONSTRUCTION

- Construction for **cabinets 40, 33N, 27B, 16B, 26, 14A, 20A, 24, 22, 20B, 29A, 29B, 12, 42, 15B, 23, 25, and 43** are in progress. Once construction is complete and fiber is placed, all locations within these cabinet boundaries may receive service. Notifications to the citizens informing them of service availability will be given at that time.
- Construction for four cabinets are being completed. Fiber blowing and splicing has begun. These cabinets will be taking customer orders in the upcoming weeks. We are anticipating a cabinet being completed and ready for new customer orders about every week until the completion of the project.
- All cabinet and network areas have either begun construction, are in the process of construction, or have all major construction completed.

CUSTOMER INSTALLATIONS

Cabinet Areas 5, 18, 7, 9, 8, 4A, 4B, 10A, 10B, 17, 2, 13A, 13B, 3A, 3B, 21, 34, 37B, 35, 31, 30, 11, 1B, 38, 39, 37A, 1A, 36A, 36B, 32, 33, 19, 26, 41, 14B, 16A, 24, and 27B are currently taking orders for new service. Customers within additional cabinet areas will be available once construction, fiber blowing, and fiber splicing are completed.

City locations are being installed once construction in the cabinet area is complete and orders for new service connections are made available.



CUSTOMER INSTALLATIONS

	Total Number of Customer Sign-ups	Number of Locations with Fiber Available	Subscribed Customer Percentage
CURRENT TOTALS	3,678	16,566	22%

MARKETING/PUBLIC RELATIONS

DEMAND AGGREGATION

As of February 21, 2025, the demand aggregation platform reached a total of **10,251** unique addresses registered within city limits.

WEBSITE REFRESH

Our team is working closely with Lehi City to add additional resources for residents to the <https://www.lehi-ut.gov/fiber/> webpage. Some of the additional resources will help residents better understand the process after selecting a provider, which has been a common pain point identified in customer surveys.

CUSTOMER TOUCHPOINTS

Our team is also working to enhance communication throughout the process, including implementing additional customer touchpoints.