

LEHI CITY

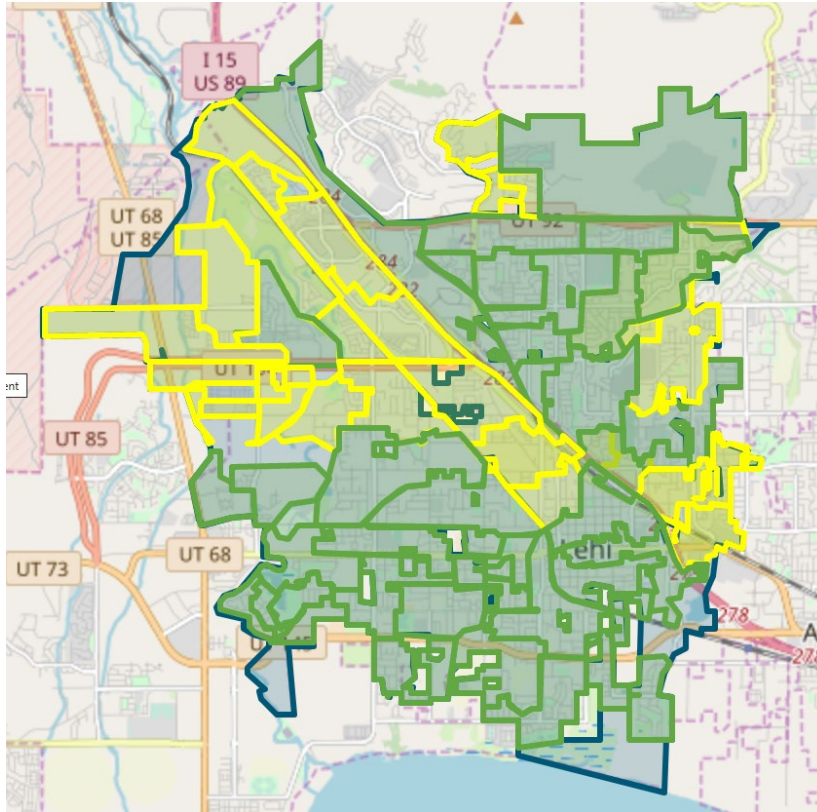
FIBER NETWORK MONTHLY UPDATE

January 29, 2025





LEHI FIBER TO MY CITY MAP



- Lehi City
- Construction in Progress
- Fiber Ready – Contact ISP

PROJECT OVERVIEW

NOTICE TO PROCEED

17 May 2022

DEMAND AGGREGATION LAUNCH

8 July 2022

GROUNDBREAKING CEREMONY

6 September 2022

SUBSTANTIAL COMPLETION

26 July 2025

COMPLETED BORING

274,838 feet

COMPLETED MICROTRENCHING

150,142 feet

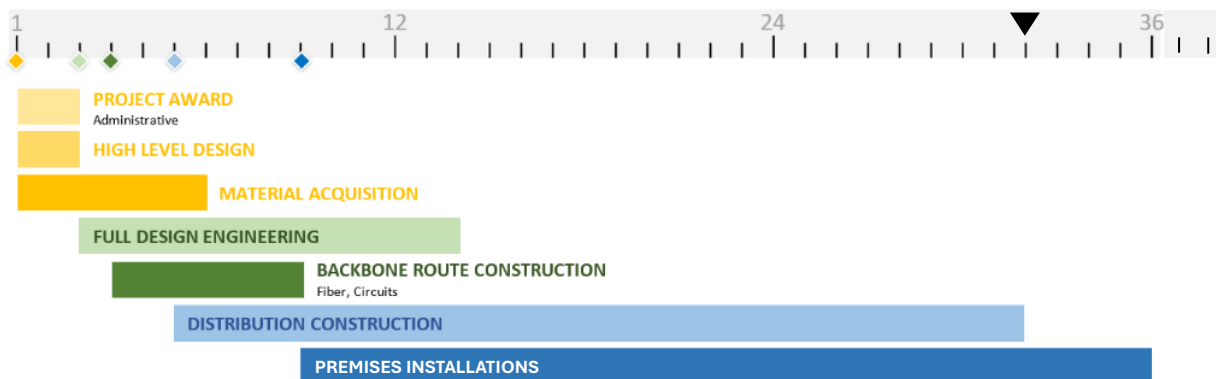
COMPLETED FIBER PLACEMENT

2,132,456 feet

EXISTING CONDUIT UTILIZED

672,564 feet

36-MONTH PROJECT TIMELINE





NETWORK OPERATIONS and NETWORK AREA CLOSE OUT

Strata Networks and Lehi City are working together to complete planning and fiber designs for Lehi Fiber facilities as part of new upcoming development projects that are within the city limits. Planning and care are provided so that these new developments can be integrated into the existing Lehi Fiber network systems under construction. When construction within a new development is completed, customers can sign up for services. New developments located within existing cabinet areas 10A, 17, and 35 have been completed, such that customers may sign up for new services.

The Lehi Fiber team and Strata are working on construction punch lists, completion checklists, and details to complete and closeout cabinet and Network Areas. Once cabinet and Network Areas are fully complete and closed out, Lehi City will obtain ownership of those portions of the network. Customer signups and associated work that will occur after an area has been closed out will transition to network operations. The ability to sign up for service on the network does not change due to the close out and ownership transition of a network area to Lehi City. Once an area is opened for customer orders the sign-up process workflows and systems do not change.

ENGINEERING and CONSTRUCTION

RING AND DISTRIBUTION FIBER CONSTRUCTION

- Construction for **cabinets 40, 33N, 27A, 27B, 28A, 28B, 16B, 26, 20A, 24, 22, 20B, 29A, 29B, 12, 42, 15B, and 23** are in progress. Once construction is complete and fiber is placed, all locations within these cabinet boundaries may receive service. Notifications to the citizens informing them of service availability will be given at that time.
- Construction for **four cabinets** is being completed. Fiber blowing and splicing has begun. These cabinets will be taking customer orders in the upcoming weeks. We are anticipating a cabinet being completed and ready for new customer orders about every week until the completion of the project.
- There are two total cabinet areas left to begin construction. Construction for the remaining cabinet areas will begin next month.
- Initial communication with citizens generally occurs one week before cabinet areas begin construction.

Aerial make-ready work by Lehi Power has been completed for all cabinet areas.

Joint use telecommunications make-ready work in all cabinet areas is intended to be completed during the Lehi Fiber aerial installation.

CUSTOMER INSTALLATIONS

Cabinet Areas 5, 18, 7, 9, 8, 4A, 4B, 10A, 10B, 17, 2, 13A, 13B, 3A, 3B, 21, 34, 37B, 35, 31, 30, 11, 1B, 38, 39, 37A, 1A, 36A, 36B, 32, 33, 19, 26, and 41 are currently taking orders for new service. Customers within additional cabinet areas will be available once construction, fiber blowing, and fiber splicing are completed.

City locations are being installed once construction in the serving cabinet area is complete and orders for new service connections are made available.



MARKETING/PUBLIC RELATIONS

DEMAND AGGREGATION

As of January 27, 2025, the demand aggregation platform reached a total of **10,186** unique addresses registered within city limits.

SURVEY MONITORING

Our team is continuously monitoring customer feedback to deepen our understanding of the customer experience. We are actively exploring new ways to educate residents about the process and to enhance communication every step of the way.