

# LEHI CITY

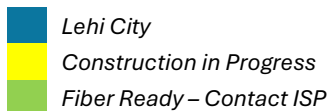
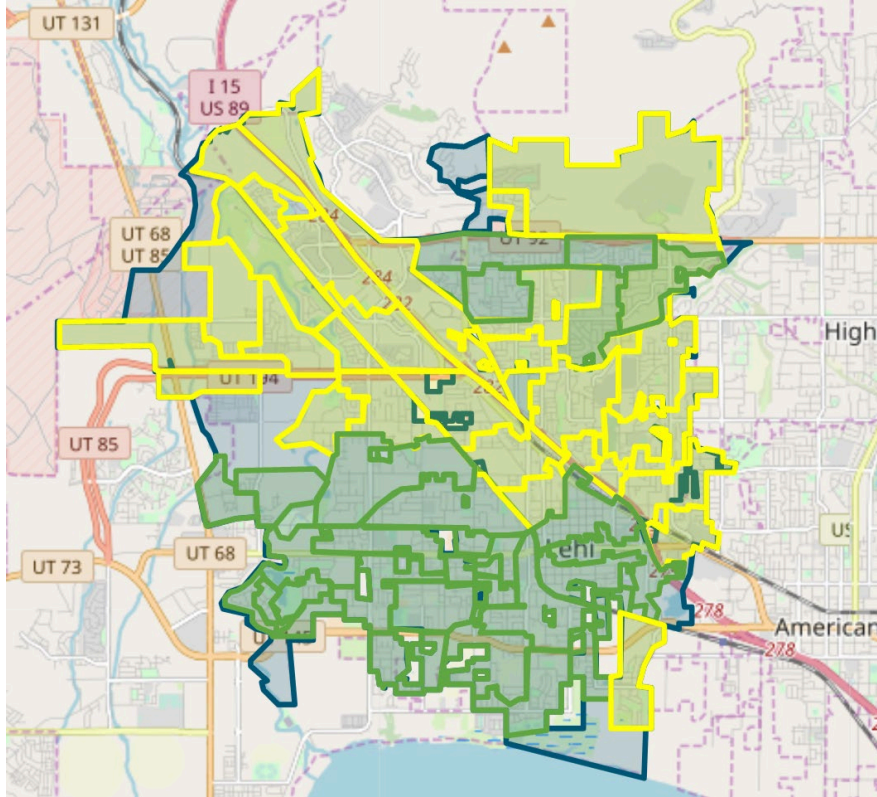
## FIBER NETWORK MONTHLY UPDATE

October 30, 2024





## LEHI FIBER TO MY CITY MAP



## PROJECT OVERVIEW

### NOTICE TO PROCEED

17 May 2022

### DEMAND AGGREGATION LAUNCH

8 July 2022

### GROUNDBREAKING CEREMONY

6 September 2022

### SUBSTANTIAL COMPLETION

26 July 2025

### COMPLETED BORING

193,845 feet

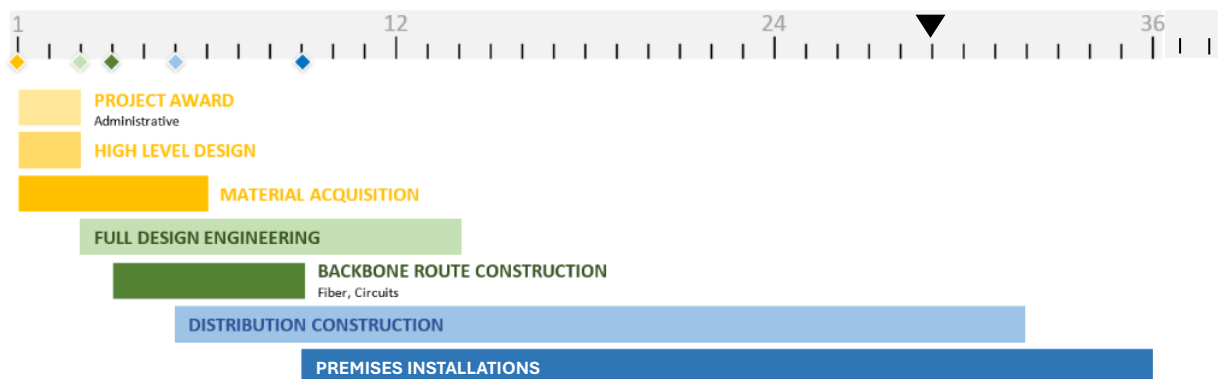
### COMPLETED MICROTRENCHING

138,735 feet

### COMPLETED FIBER PLACEMENT

1,004,442 feet

## 36-MONTH PROJECT TIMELINE





## NETWORK OPERATIONS and NETWORK AREA CLOSE OUT

Strata Networks and Lehi City are working together to complete planning and fiber designs for Lehi Fiber facilities as part of new upcoming development projects that are within the city limits. Planning and care are provided so that these new developments can be integrated into the existing Lehi Fiber network systems under construction. When construction within a new development is completed, customers can sign up for services. New developments located within existing cabinet areas 10A and 17 have been completed, such that customers may sign up for new services.

The Lehi Fiber team and Strata are working on construction punch lists, completion checklists, and details to complete and closeout some of the initial build cabinet and Network Areas. Once cabinet and Network Areas are fully complete and closed out, Lehi City will obtain ownership of those portions of the network. Customer sign ups and associated work that will occur after an area has been closed out will transition to network operations. The ability to sign up for service on the network does not change due to the close out and ownership transition of a network area to Lehi City. Once an area is opened for customer orders the sign-up process workflows and systems do not change.

## ENGINEERING and CONSTRUCTION

### RING AND DISTRIBUTION FIBER CONSTRUCTION

- Construction for **cabinets 19, 40, 41, 33, 32, 33N, 27A, 27B, 28A, 28B, 16A, 16B, 26, 14A, 14B, 20A, 24, 22, 20B, 6, 29A, 29B, and 12** are in progress. Once construction is complete and fiber is placed, all locations within these cabinet boundaries may receive service. Notifications to the citizens informing them of service availability will be given at that time.
- Aerial make-ready work is continuing in **cabinets 14A and 14B**.
- Construction for **cabinet 42** will begin in the upcoming weeks.
- Initial communication with citizens generally occurs one week before cabinet areas begin construction.
- Construction for several cabinets are being completed. Fiber blowing and splicing has begun. These cabinets will be taking customer orders in the upcoming weeks. We are anticipating a cabinet being completed and ready for new customer orders about every week through the end of the year.
- There are five total cabinet areas left to begin construction. Scheduling for remaining cabinets to start construction is being finalized. We expect all remaining cabinet areas to begin construction before the year's end.
- Strata is working diligently to complete and or tidy up construction limits along city streets before the winter weather is upon us.

Aerial make-ready work by Lehi Power is in progress for some of the cabinets under construction. Additional power make-ready work in other cabinet areas will begin in the upcoming weeks.

Joint use telecommunications make-ready work in all cabinet areas is intended to be completed during the Lehi Fiber aerial installation.



#### CUSTOMER INSTALLATIONS

**Cabinet Areas 5, 18, 7, 9, 8, 4A, 4B, 10A, 10B, 17, 2, 13A, 13B, 3A, 3B, 21, 34, 37B, 35, 31, 30, 11, 1B, 38, and 39** are currently taking orders for new service. Customers within additional cabinet areas will be available once construction, fiber blowing, and fiber splicing are completed.

Coordination with the Lehi City team is ongoing to schedule and install fiber at city locations such as city parks, city buildings, power facilities, and water facilities. These locations are being installed once the construction in the serving cabinet area is complete and orders for new service connections are made available.



## MARKETING/PUBLIC RELATIONS

### DEMAND AGGREGATION

As of October 28, 2024, the demand aggregation platform reached a total of 9,863 unique addresses registered within city limits.

### SURVEY EXPANSION

Our team is working closely with Lehi City to help gain better market intelligence on why residents may not be subscribing to the network. We are actively collecting responses to help address residents' concerns.