



**strata**  
NETWORKS

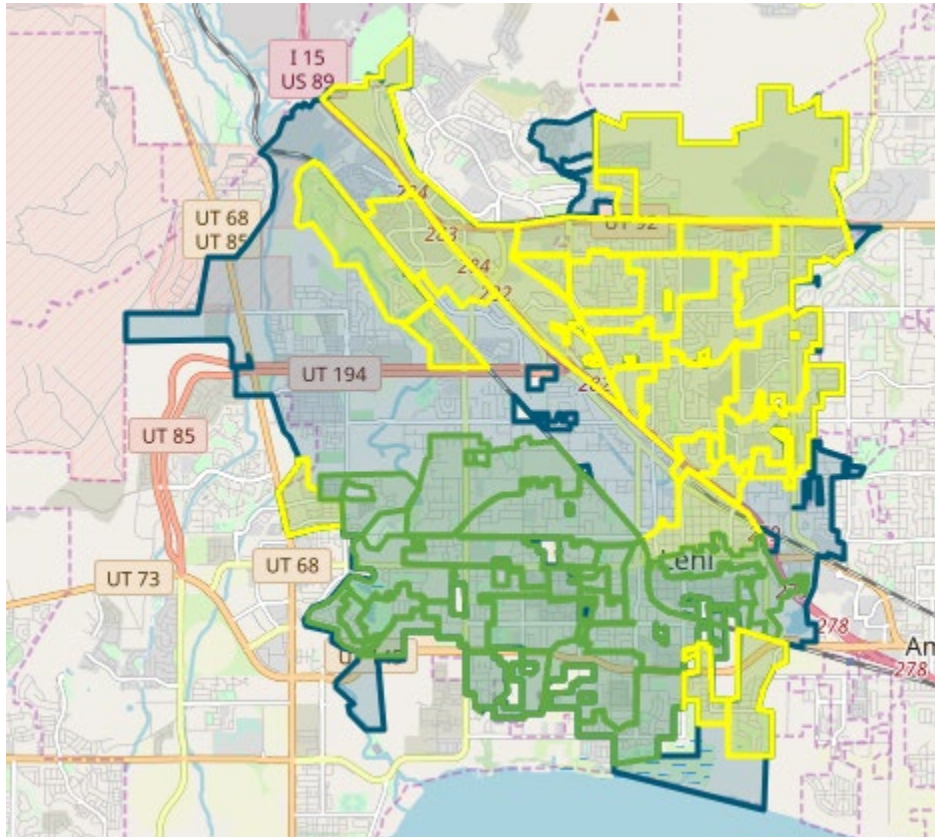


# **LEHI CITY FIBER NETWORK MONTHLY UPDATE**

June 26, 2024



## LEHI FIBER TO MY CITY MAP



## PROJECT OVERVIEW

### NOTICE TO PROCEED

17 May 2022

### DEMAND AGGREGATION LAUNCH

8 July 2022

### GROUNDBREAKING CEREMONY

6 September 2022

### SUBSTANTIAL COMPLETION

26 July 2025

### COMPLETED BORING

98,940 feet

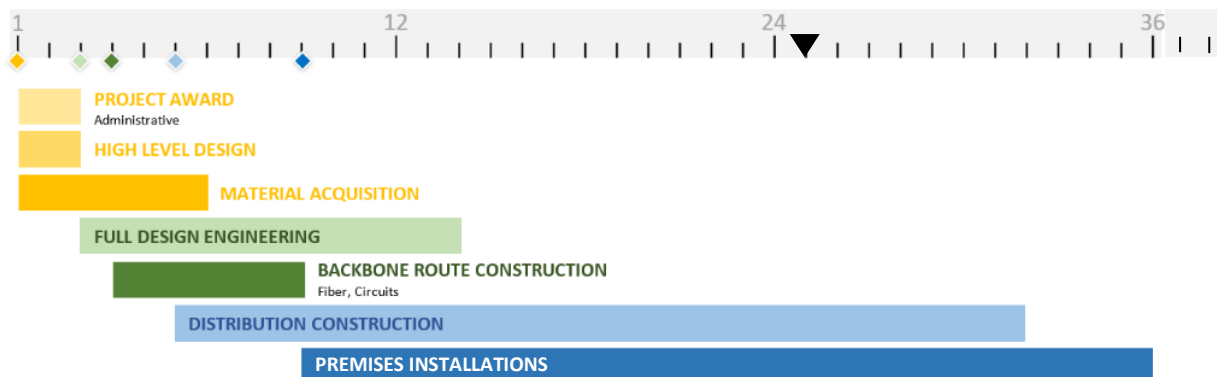
### COMPLETED MICROTRENCHING

136,231 feet

### COMPLETED FIBER PLACEMENT

714,534 feet

## 36-MONTH PROJECT TIMELINE





## NETWORK OPERATIONS and NETWORK AREA CLOSE OUT

Strata Networks and Lehi City are working together to complete planning and fiber designs for Lehi Fiber facilities as part of new upcoming development projects that are within the city limits. Planning and care are provided so that these new developments can be integrated into the existing Lehi Fiber network systems under construction. Strata has completed several designs for these new development projects and is in the planning and preparation stages to begin construction within these developments.

The Lehi Fiber team and Strata are working on construction punch lists, completion checklists, and details to complete and closeout some of the initial build cabinet and Network Areas. Once cabinet and Network Areas are fully complete and closed out, Lehi City will obtain ownership of those portions of the network. Customer sign ups and associated work that will occur after an area has been closed out will transition to network operations. The ability to sign up for service on the network does not change due to the close out and ownership transition of a network area to Lehi City. Once an area is opened for customer orders the sign-up process workflows and systems do not change.

## ENGINEERING and CONSTRUCTION

### SHELTER DESIGNS AND CONSTRUCTION

The installation of the backup generator and networking equipment for **Shelter 3** is being finalized. Once these items are complete all shelters on the project will be fully operational.

### RING AND DISTRIBUTION FIBER CONSTRUCTION

- Construction for **cabinets 35, 37A, 36A, 36B, 11, 31, 1A, 1B, 30, 19, 38, 40, 39, 41, 33, 32, 33N, 27A, 27B, 28A, 28B, and 16B** are in progress. Once construction is complete and fiber is placed, all locations within these cabinet boundaries may receive service. Notifications to the citizens informing them of service availability will be given at that time.
- Aerial make-ready work is in progress for **cabinet 40**.
- Construction for **additional cabinets** will begin in the upcoming weeks. Preparation and scheduling for additional cabinets to start construction is being finalized.
- Initial communication with citizens generally occurs one week before cabinet areas begin construction.
- Construction for **several cabinets** are being completed. Fiber blowing and splicing has begun. These cabinets will be taking customer orders in the upcoming weeks. We are anticipating a cabinet being completed and ready for new customer orders about every other week.

Aerial make-ready work by Lehi Power is in progress for some of the cabinets that are currently under construction. Additional power make-ready work in other cabinet areas will begin in upcoming weeks.





Joint use telecommunications make-ready work in all cabinet areas is intended to be completed during the Lehi Fiber aerial installation.

#### CUSTOMER INSTALLATIONS

**Cabinet Areas 5, 18, 7, 9, 8, 4A, 4B, 10A, 10B, 17, 2, 13A, 13B, 3A, and 3B** are currently taking orders for new service. Customers within additional cabinet areas will be available once construction, fiber blowing, and fiber splicing are completed.

CUSTOMER INSTALLATIONS			
Cabinet Area	Total Number of Customer Sign-ups	Total Number of Locations with Fiber Available	Subscribed Customer Percentage
Cabinet Area 5	116	548	21%
Cabinet Area 18	171	490	35%
Cabinet Area 7	142	531	27%
Cabinet Area 9	157	549	29%
Cabinet Area 8	198	535	37%
Cabinet Area 4A	163	508	32%
Cabinet Area 4B	72	171	42%
Cabinet Area 10A	85	558	15%
Cabinet Area 10B	30	474	6%
Cabinet Area 17	92	622	15%
Cabinet Area 2	145	533	27%
Cabinet Area 13A	82	357	23%
Cabinet Area 13B	57	253	23%
Cabinet Area 3A	78	520	15%
Cabinet Area 3B	98	505	19%
<b>TOTALS</b>	<b>1686</b>	<b>7154</b>	<b>24%</b>

#### MARKETING/PUBLIC RELATIONS

##### GREAT NEWS!

This month the marketing team helped announce several zones as under construction or accepting orders. Working closely with Lehi City, we have reached out to residents in these areas through mailers, emails, social media, and updates on [lehi.fibertomycity.com](https://lehi.fibertomycity.com).

##### DEMAND AGGREGATION

As of June 21, 2024, the demand aggregation platform reached a total of **9,366** unique addresses registered within city limits. The current network take rate is **24.25%**. This includes all customers who have signed up for service and are either active or pending.



Our team continues to work closely with Lehi City to promote the network and its benefits to the community.

#### DIGITAL AD CAMPAIGN

This month, our team helped Lehi City launch a digital ad campaign to raise awareness of the network. The campaign was run on Facebook and Instagram, directing residents to pre-register their addresses. There was nearly a 30% increase in pre-registrations throughout the month compared to the average monthly preregistrations this year.