



strata
NETWORKS

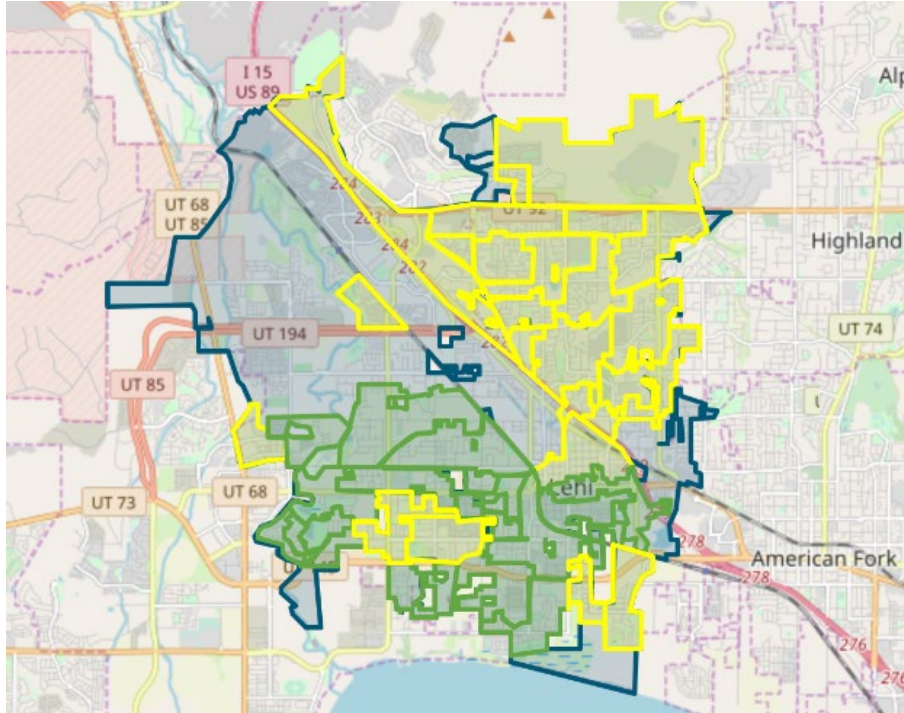


LEHI CITY FIBER NETWORK MONTHLY UPDATE

May 29, 2024



LEHI FIBER TO MY CITY MAP



PROJECT OVERVIEW

NOTICE TO PROCEED

17 May 2022

DEMAND AGGREGATION LAUNCH

8 July 2022

GROUNDBREAKING CEREMONY

6 September 2022

SUBSTANTIAL COMPLETION

26 July 2025

COMPLETED BORING

90,908 feet

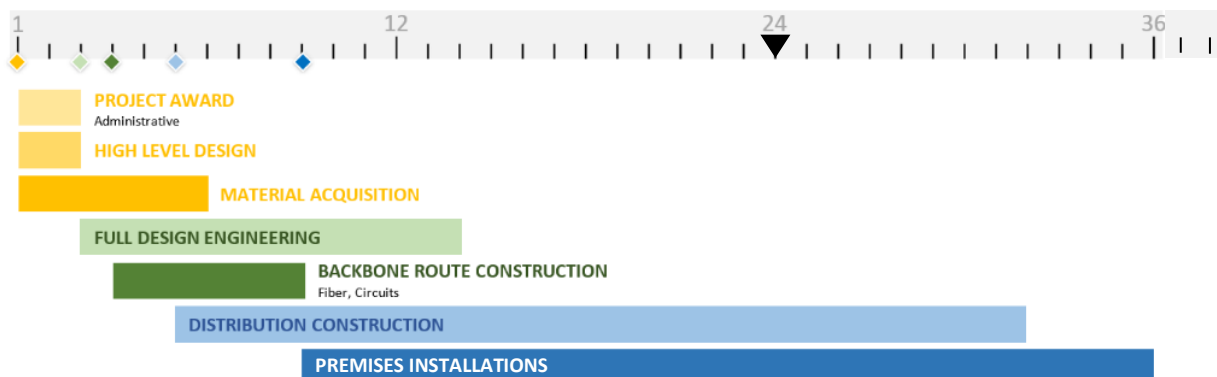
COMPLETED MICROTRENCHING

116,200 feet

COMPLETED FIBER PLACEMENT

638,504 feet

36-MONTH PROJECT TIMELINE





NETWORK OPERATIONS and NETWORK AREA CLOSE OUT

Strata Networks and Lehi City are working together to complete planning and fiber designs for Lehi Fiber facilities as part of new upcoming development projects that are within the city limits. Planning and care are provided so that these new developments can be integrated into the existing Lehi Fiber network systems under construction.

The Lehi Fiber team and Strata are working on construction punch lists, completion checklists, and details to complete and closeout some of the initial build cabinet and Network Areas. Once cabinet and Network Areas have been fully complete and closed out Lehi City will obtain ownership of those portions of the network. Customer sign ups and associated work that will occur after an area has been closed out will transition to network operations. The ability to sign up for service on the network does not change due to the close out and ownership transition of a network area to Lehi City. Once an area is opened for customer orders the sign-up process workflows and systems do not change.

ENGINEERING and CONSTRUCTION

SHELTER DESIGNS AND CONSTRUCTION

The installation of power, natural gas, and networking equipment for **Shelter 3** is in progress. Once these items are complete all shelters on the project will be fully operational.

RING AND DISTRIBUTION FIBER CONSTRUCTION

- Construction for **cabinets 37A, 37B, 36A, 36B, 11, 34, 35, 31, 1A, 1B, 30, 19, 38, 40, 39, 41, 33, 32, 33N, 27A and 27B** are in progress. Once construction is complete and fiber is placed, all locations within these cabinet boundaries may receive service. Notifications to the citizens informing them of service availability will be given at that time.
- Aerial make-ready work is in progress for **cabinets 40 and 41**.
- Construction for **additional cabinets** will begin in the upcoming weeks. Preparation and scheduling for additional cabinets to start construction is being finalized.
- Fiber blowing and splicing for the backbone ring section between **shelters 3 and 4** is being finalized.
- Initial communication with citizens generally occurs one week before cabinet areas begin construction.
- Construction for **several cabinets** are being completed. Fiber blowing and splicing has begun. These cabinets will be taking customer orders in the upcoming weeks. We are anticipating a cabinet being completed and ready for new customer orders about every other week.

Aerial make-ready work by Lehi Power is in progress for some of the cabinets that are currently under construction. Additional power make ready work in other cabinet areas will begin in upcoming weeks.

Joint use telecommunications make ready work in all cabinet areas is intended to be completed during the Lehi Fiber aerial installation.

CUSTOMER INSTALLATIONS

Cabinet Areas 5, 18, 7, 9, 8, 4A, 4B, 10A, 10B, 17, 2, 13A, and 13B are currently taking orders for new service. Customers within additional cabinet areas will be available once construction, fiber blowing, and fiber splicing are completed.



CUSTOMER INSTALLATIONS			
Cabinet Area	Total Number of Customer Sign-ups	Total Number of Locations with Fiber Available	Subscribed Customer Percentage
Cabinet Area 5	116	548	21%
Cabinet Area 18	169	490	34%
Cabinet Area 7	141	531	27%
Cabinet Area 9	154	549	28%
Cabinet Area 8	196	535	37%
Cabinet Area 4A	160	508	31%
Cabinet Area 4B	71	171	42%
Cabinet Area 10A	79	526	15%
Cabinet Area 10B	30	210	14%
Cabinet Area 17	87	610	14%
Cabinet Area 2	123	533	23%
Cabinet Area 13A	67	357	19%
Cabinet Area 13B	42	253	17%
TOTALS	1435	5821	25%

MARKETING/PUBLIC RELATIONS

GREAT NEWS!

This month the marketing team helped announce a few zones as under construction or accepting orders. Working closely with Lehi City, we have reached out to residents in these areas through mailers, emails, social media, and updates on lehi.fibertomycity.com.

DEMAND AGGREGATION

As of May 24, 2024, the demand aggregation platform reached a total of **9,237** unique addresses registered within city limits. The current network take rate is **23.08%**. This includes all customers who have signed up for service and are either active or pending.

Our team continues to work closely with Lehi City to promote the network and its benefits to the community.