

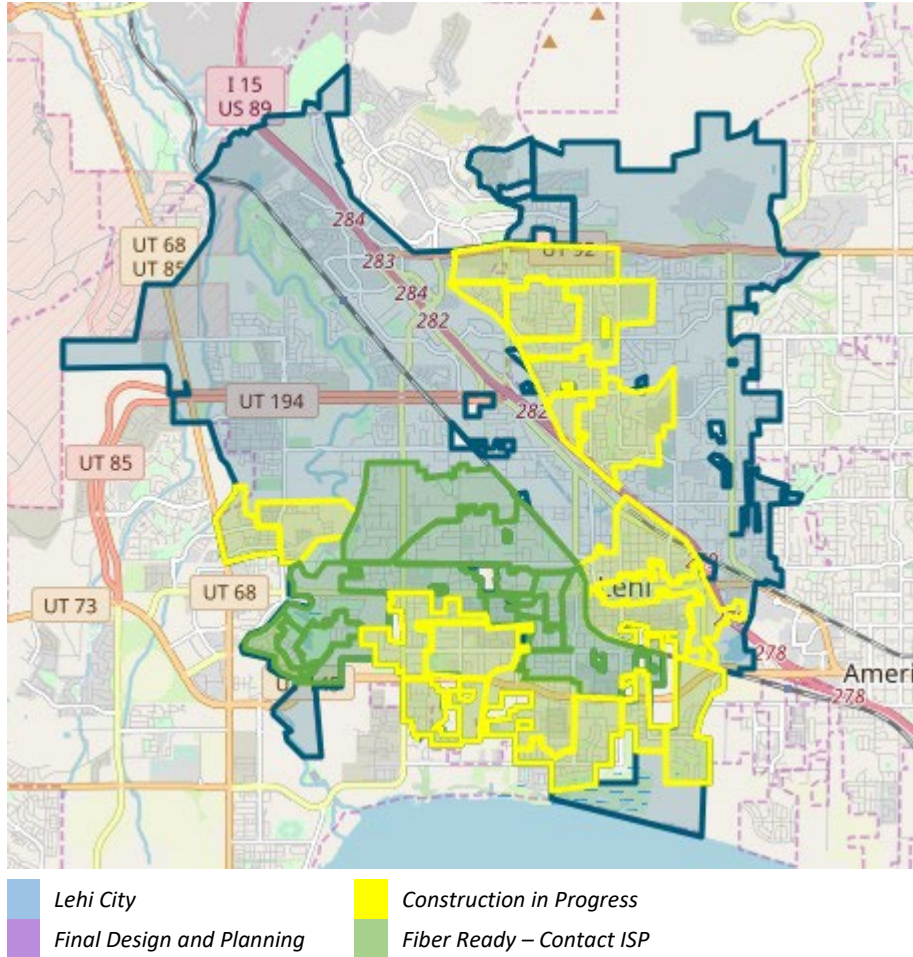


# LEHI CITY FIBER NETWORK MONTHLY UPDATE

February 28, 2024



## LEHI FIBER TO MY CITY MAP



### PROJECT OVERVIEW

#### NOTICE TO PROCEED

17 May 2022

#### DEMAND AGGREGATION LAUNCH

8 July 2022

#### GROUNDBREAKING CEREMONY

6 September 2022

#### SUBSTANTIAL COMPLETION

26 July 2025

#### COMPLETED BORING

35,100 feet

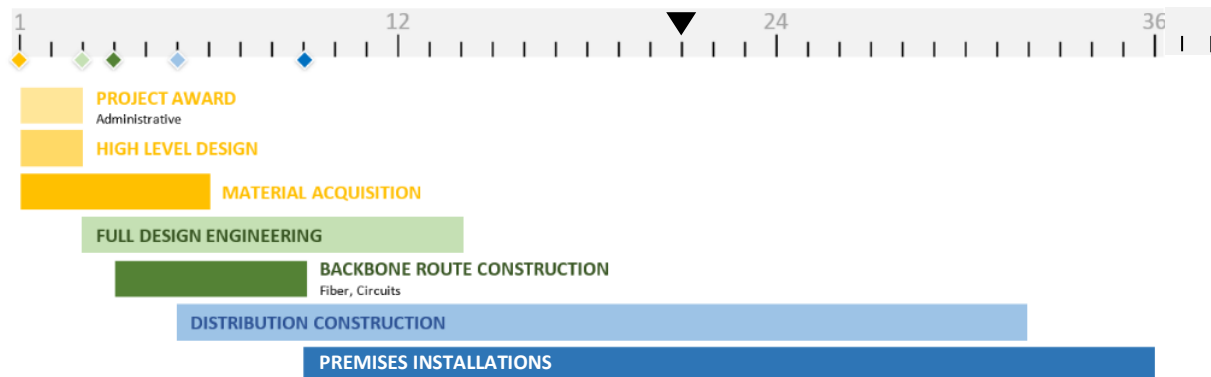
#### COMPLETED MICROTRENCHING

107,500 feet

#### COMPLETED FIBER PLACEMENT

489,670 feet

## 36-MONTH PROJECT TIMELINE





## ENGINEERING, CONSTRUCTION and NETWORK OPERATIONS

### DESIGN AND CONSTRUCTION DOCUMENTS

- Engineering design and City reviews for the additional area within Traverse Mountain, as contained in change order number four, have begun. These designs and permit drawings are anticipated to be finalized in the next couple of months. City reviews for all other areas of the project have been completed.

### SHELTER DESIGNS AND CONSTRUCTION

- **Shelter 3** is scheduled to be installed at the site next week. Once installed all shelters on the project will be active and complete.

### RING AND DISTRIBUTION FIBER CONSTRUCTION

- Construction for the backbone ring section between **shelters 2 and 4** will begin in the upcoming weeks. Once the final ring segment is complete the backbone fiber ring will be complete.
- Construction for **cabinets 17, 13A, 13B, 3A, 3B, 2, 37A, 37B, 36A, 36B, 11, 21, 34, 35, 31, 1A, and 1B** are in progress. Once construction is complete and fiber is placed, all locations within these cabinet boundaries may receive service. Notifications to the citizens informing them of service availability will be given at that time.
- Aerial make ready work is being finalized for **cabinet 19**.
- Construction for **cabinets 19, 30, 40, 39, and 38** will begin in the upcoming weeks. Preparation and scheduling for additional cabinets to start construction is being finalized.
- Initial communication with citizens generally occurs one week before cabinet areas begin construction.
- Construction for **cabinets 10A and 10B** is being completed. Fiber blowing and splicing is in progress. These cabinets will be taking customer orders for new service starting next week.

Aerial make ready work by Lehi Power is in progress for some of the cabinets that are currently under construction. Additional power make ready work in other cabinet areas will begin in upcoming weeks.

Joint use telecommunications make ready work in all cabinet areas is intended to be completed during the Lehi Fiber aerial installation.

### CUSTOMER INSTALLATIONS

**Cabinet Areas 5, 18, 7, 9, 8, 4A, and 4B** are currently taking orders for new service. Customers within additional cabinet areas will be available once construction, fiber blowing, and fiber splicing are completed.





CUSTOMER INSTALLATIONS			
Cabinet Area	Total Number of Customer Sign-ups	Total Number of Locations with Fiber Available	Subscribed Customer Percentage
Cabinet Area 5	108	548	20%
Cabinet Area 18	166	490	34%
Cabinet Area 7	130	531	24%
Cabinet Area 9	141	549	26%
Cabinet Area 8	170	535	32%
Cabinet Area 4A	116	508	23%
Cabinet Area 4B	27	171	16%
<b>TOTALS</b>	<b>858</b>	<b>3332</b>	<b>26%</b>

## MARKETING/PUBLIC RELATIONS

### GREAT NEWS!

This month the marketing team helped announce that five zones have moved into construction and one is now accepting orders. Working closely with Lehi City, we have reached out to residents in these areas through mailers, emails, social media, and updates on [lehi.fibertomycity.com](http://lehi.fibertomycity.com).

### DEMAND AGGREGATION

As of February 18, 2024, the demand aggregation platform reached a total of **8,679** unique addresses registered within city limits. The current network take rate is **28.16%**. This includes all customers who have signed up for service and are either active or pending.

### UPCOMING OPEN HOUSE

Our team is excited about the upcoming Lehi Fiber Network open house. This event is a great opportunity for Lehi residents to learn more about the network and to ask questions. Strata will be attending, as well as Lehi City representatives and ISP representatives. We have worked to provide Lehi with various assets in preparation for the event.