

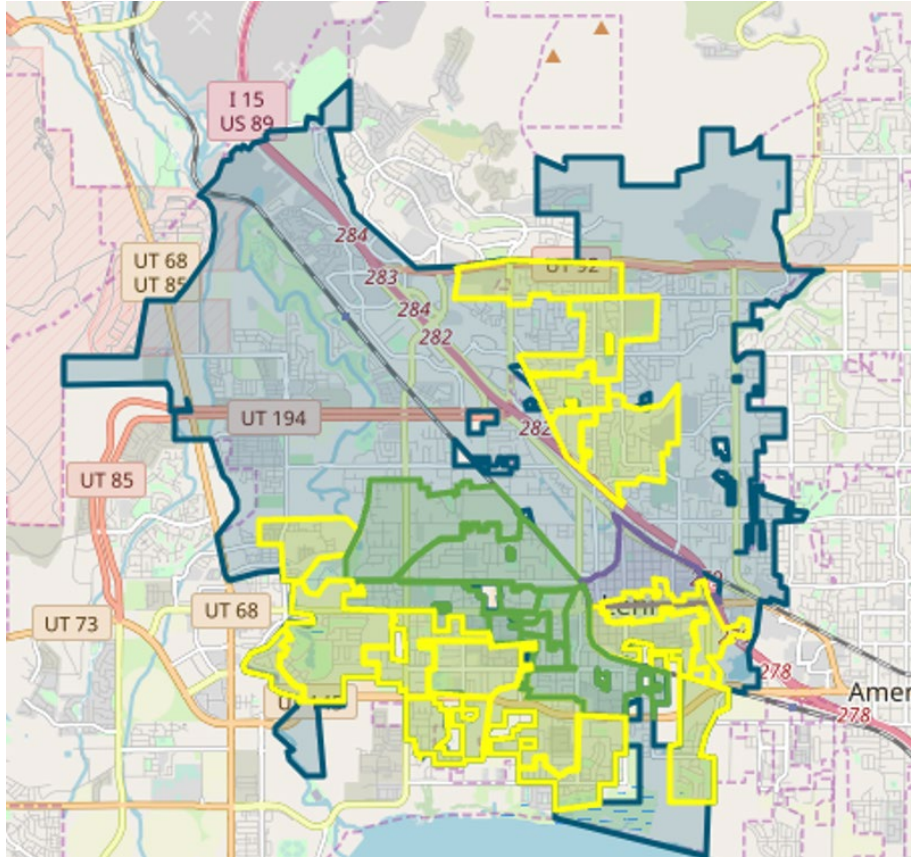


LEHI CITY FIBER NETWORK MONTHLY UPDATE

January 31, 2024



LEHI FIBER TO MY CITY MAP



- Lehi City
- Final Design and Planning
- Construction in Progress
- Fiber Ready – Contact ISP

PROJECT OVERVIEW

NOTICE TO PROCEED

17 May 2022

DEMAND AGGREGATION LAUNCH

8 July 2022

GROUNDBREAKING CEREMONY

6 September 2022

SUBSTANTIAL COMPLETION

26 July 2025

COMPLETED BORING

34,900 feet

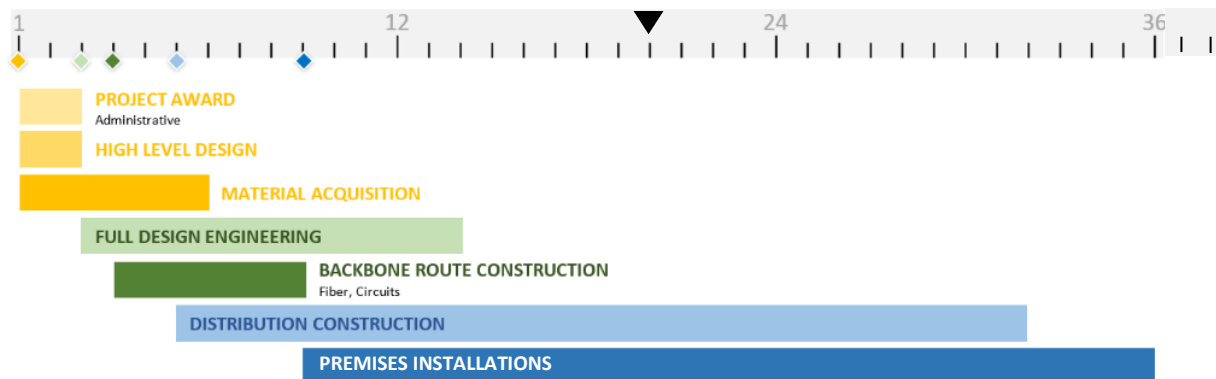
COMPLETED MICROTRENCHING

107,100 feet

COMPLETED FIBER PLACEMENT

488,620 feet

36-MONTH PROJECT TIMELINE





Our crews continue to work hard on the Lehi Fiber Network. There are several areas under construction and over 600 active subscribers on the network.

“Easy process and dedicated workers made this all happen. Many thanks go out to Lehi, Strata, and the Installer teams.” – Jayson W., Lehi Customer

ENGINEERING, CONSTRUCTION and NETWORK OPERATIONS

LOW-LEVEL DESIGN AND CONSTRUCTION DOCUMENTS

- City reviews for all areas of the project have been completed. All designs and permit drawings are anticipated to be finalized in the next few weeks. Cabinet areas and projects will be scheduled to start construction after reviews are completed and permits are obtained.

SHELTER DESIGNS AND CONSTRUCTION

- **Shelter 3** is scheduled to be installed at the site and completed in the next few weeks.

RING AND DISTRIBUTION FIBER CONSTRUCTION

- Construction for the backbone ring section between **shelters 1 and 3** has been completed. Fiber blowing and splicing is under way.
- Construction for **cabinets 10A, 10B, 13A, 13B, 3A, 3B, 2, 17, 37A, 36A, and 36B** are in progress. Once construction is complete and fiber is placed, all locations within these cabinet boundaries may receive service. Notifications to the citizens informing them of service availability will be given at that time.
- Aerial make ready work is being finalized for **cabinets 36A and 37B**.
- Construction for **cabinets 11, 1A, 1B, and 21** will begin shortly. Preparation and scheduling for additional cabinets to start construction is being finalized.
- Initial communication with citizens generally occurs one week before cabinet areas begin construction.
- Construction for **cabinets 4A and 4B** have been completed. Fiber blowing and splicing is in progress. These cabinets will be taking orders for new service starting next week.

Aerial make ready work by Lehi Power is in progress for some of the cabinets that are currently under construction. Additional power make ready work in other cabinet areas will begin in upcoming weeks.

Joint use telecommunications make ready work in all cabinet areas is intended to be completed during the Lehi Fiber aerial installation.

CUSTOMER INSTALLATIONS

Cabinet Areas 5, 18, 7, 9, and 8 are currently taking orders for new service. Customers within additional cabinet areas will be available once construction, fiber blowing, and fiber splicing are completed.



CUSTOMER INSTALLATIONS			
Cabinet Area	Total Number of Customer Sign-ups	Total Number of Locations with Fiber Available	Subscribed Customer Percentage
Cabinet Area 5	106	548	19%
Cabinet Area 18	158	490	32%
Cabinet Area 7	123	531	23%
Cabinet Area 9	135	549	25%
Cabinet Area 8	162	535	30%
TOTALS	684	2653	26%

MARKETING/PUBLIC RELATIONS

GREAT NEWS!

This month the marketing team helped announce that six zones have moved into construction. Working closely with Lehi City, we have reached out to residents in these areas through mailers, emails, social media, and updates on lehi.fibertomycity.com.

DEMAND AGGREGATION

As of January 22, 2024, the demand aggregation platform reached a total of **8,381** unique addresses registered within city limits. The current network take rate is **26.62%**. This includes all customers who have signed up for service and are either active or pending. (Please note that the take rate has been updated to reflect the locations where residents can sign up for services versus all built-out fiber locations.)

6 MONTH SURVEY

The marketing team worked closely with Lehi City to develop an additional survey that will be sent to residents six months after their connection.