



strata
NETWORKS

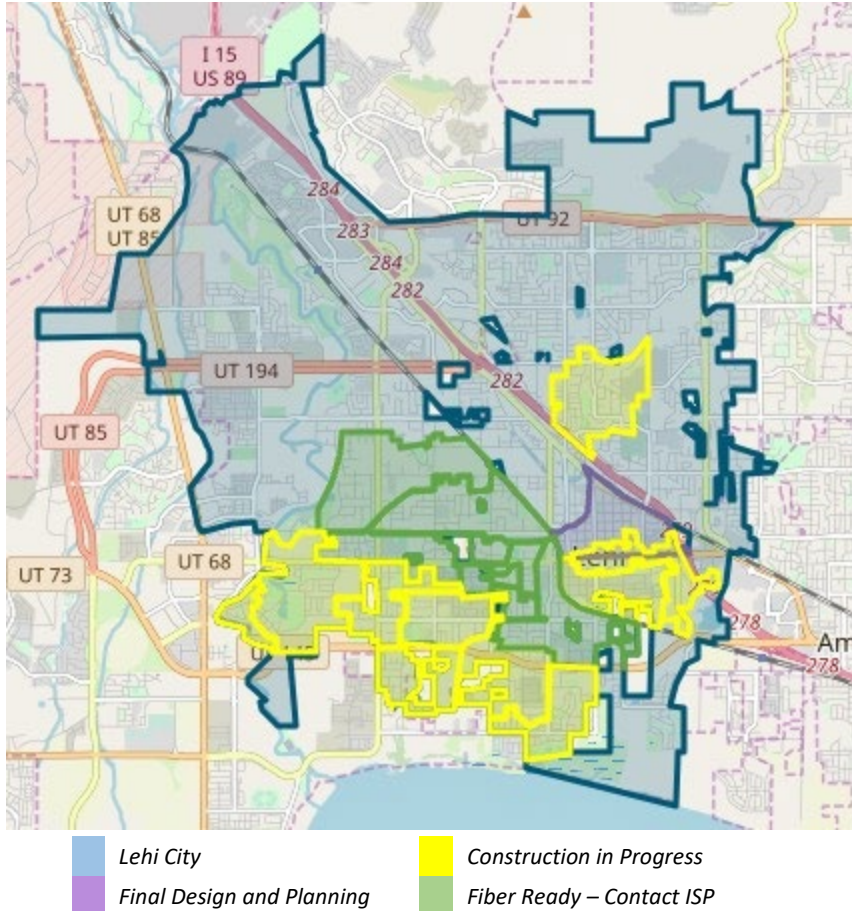


LEHI CITY FIBER NETWORK MONTHLY UPDATE

December 27, 2023



LEHI FIBER TO MY CITY MAP



PROJECT OVERVIEW

NOTICE TO PROCEED

17 May 2022

DEMAND AGGREGATION LAUNCH

8 July 2022

GROUNDBREAKING CEREMONY

6 September 2022

SUBSTANTIAL COMPLETION

17 May 2025

COMPLETED BORING

33,800 feet

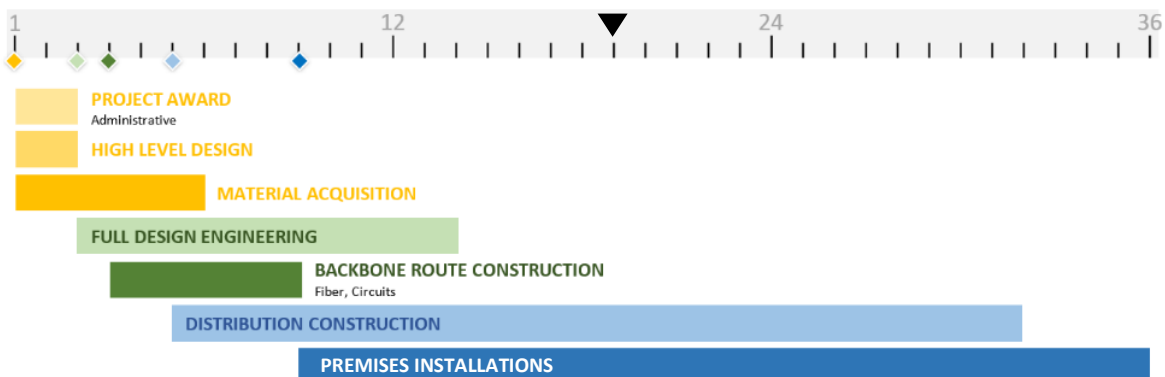
COMPLETED MICROTRENCHING

105,900 feet

COMPLETED FIBER PLACEMENT

485,520 feet

36-MONTH PROJECT TIMELINE





ENGINEERING, CONSTRUCTION and NETWORK OPERATIONS

LOW-LEVEL DESIGN AND CONSTRUCTION DOCUMENTS

- City reviews for all areas of the project have been completed. All designs and permit drawings are anticipated to be finalized in the next few weeks. Cabinet areas and projects will be scheduled to start construction after reviews are completed and permits are obtained.

SHELTER DESIGNS AND CONSTRUCTION

- The foundation construction for **shelter 3** is in progress. Once complete the building will be installed at the site. This is anticipated to be completed in the next few weeks.

RING AND DISTRIBUTION FIBER CONSTRUCTION

- Fiber splicing and **shelter 4** equipment turn up is being finalized.
- Construction for the backbone ring section between **shelters 1 and 3** is in progress. Construction is anticipated to be completed in the next few weeks.
- Construction for **cabinets 10A, 10B, 4A, 4B, 13A, 13B, 3A, 3B, and 2** are in progress. Once construction is complete and fiber is placed, all locations within these cabinet boundaries may receive service. Notifications to the citizens informing them of service availability will be given at that time.
- Aerial make ready work is being finalized for **cabinets 11, 37A, and 37B**. Construction for **cabinets 36A, 36B, 37A, 37B, 11, 1A, and 1B** will begin shortly. Preparation and scheduling for additional cabinets to start construction is being finalized.
- Initial communication with citizens generally occurs one week before cabinet areas begin construction.

Aerial make ready work by Lehi Power is in progress for some of the cabinets that are currently under construction. Additional power make ready work in other cabinet areas will begin in upcoming weeks.

Joint use telecommunications make ready work in all cabinet areas is intended to be completed during the Lehi Fiber aerial installation.

CUSTOMER INSTALLATIONS

Cabinet Areas 5, 18, 7, 9, and 8 are currently taking orders for new service. Customers within additional cabinet areas will be available once construction, fiber blowing, and fiber splicing are completed.

CUSTOMER INSTALLATIONS			
Cabinet Area	Total Number of Customer Sign-ups	Total Number of Locations with Fiber Available	Subscribed Customer Percentage
Cabinet Area 5	101	548	18%
Cabinet Area 18	158	490	32%
Cabinet Area 7	120	531	23%
Cabinet Area 9	134	549	24%
Cabinet Area 8	132	535	25%
TOTALS	645	2653	24%



MARKETING/PUBLIC RELATIONS

GREAT NEWS!

This month we announced that an additional zone is ready to take orders and we updated one zone to “Construction in Progress.” Working closely with Lehi City, we have reached out to residents in the area through mailers, emails, social media, and updates on lehi.fibertomycity.com.

DEMAND AGGREGATION

As of December 17, 2023, the demand aggregation platform reached a total of **8,225** unique addresses registered within city limits. The current network take rate is **19.73%**. This includes all customers who have signed up for service and are either active or pending.

VIDEO AND PHOTO SHOOT

Our team coordinated with V6 Media to provide Lehi with various assets from a recent photoshoot. [Click here](#) to see a video Lehi released this month featuring Mayor Johnson providing a fiber update.

HOLIDAY CAMPAIGN

Our team provided Lehi with a few holiday-themed assets, including social media graphics and emails.