



strata
NETWORKS

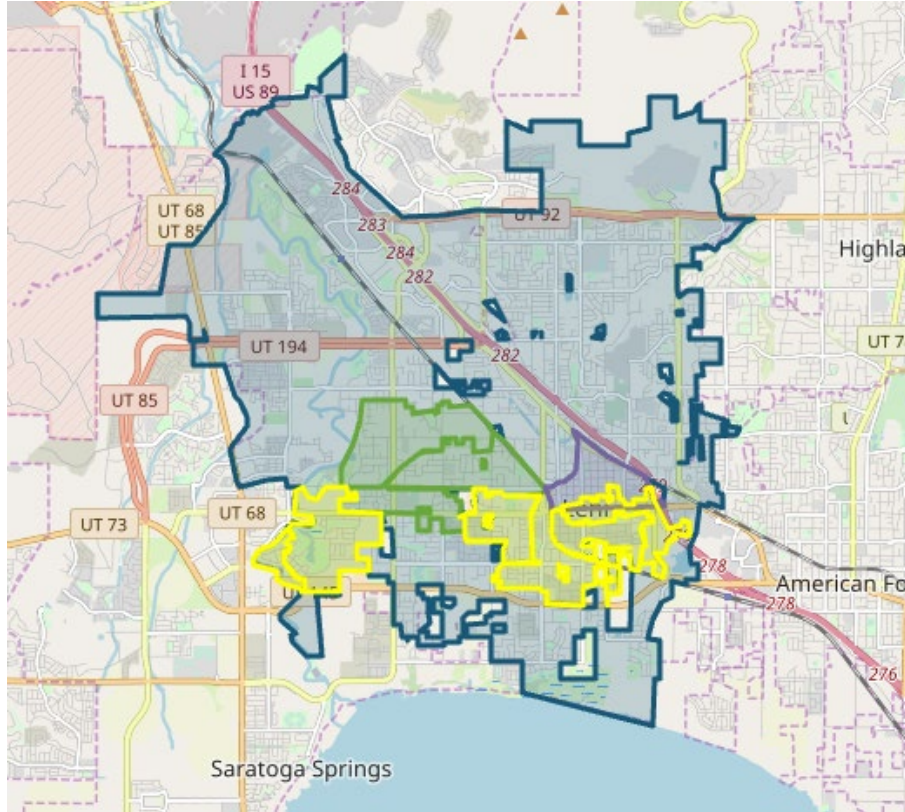


LEHI CITY FIBER NETWORK MONTHLY UPDATE

October 25, 2023



LEHI FIBER TO MY CITY MAP



- Lehi City*
- Final Design and Planning*
- Construction in Progress*
- Fiber Ready – Contact ISP*

PROJECT OVERVIEW

NOTICE TO PROCEED

17 May 2022

DEMAND AGGREGATION LAUNCH

8 July 2022

GROUNDBREAKING CEREMONY

6 September 2022

SUBSTANTIAL COMPLETION

17 May 2025

COMPLETED BORING

Approx. 31,500 feet

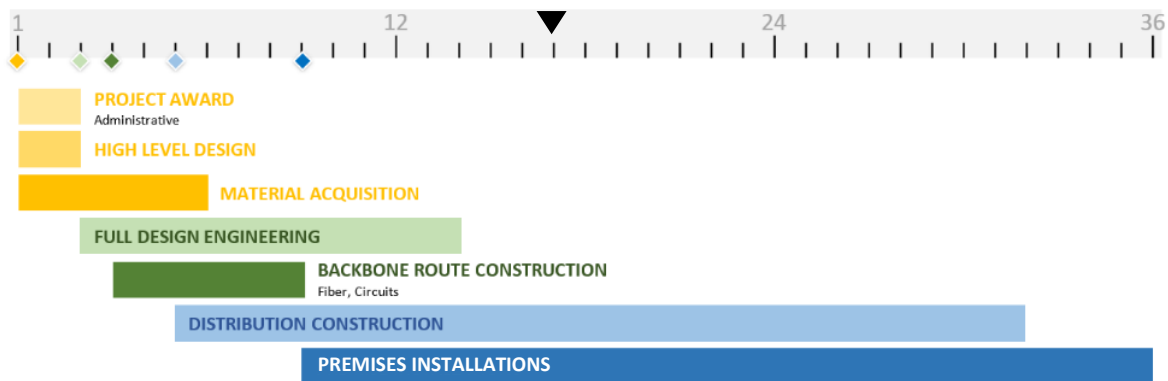
COMPLETED MICROTRENCHING

Approx. 102,500 feet

COMPLETED FIBER PLACEMENT

Approx. 410,100 feet

36-MONTH PROJECT TIMELINE





ENGINEERING, CONSTRUCTION and NETWORK OPERATIONS

MID-LEVEL DESIGN

Field data collection is 100% complete for the entire project.

Mid-level design reviews for the final six remaining network and cabinet areas will take place in the month of October.

LOW-LEVEL DESIGN AND CONSTRUCTION DOCUMENTS

Construction drawings for cabinet areas will continue to be submitted on a weekly basis for city review. Cabinet areas and projects will be scheduled to start construction after reviews are completed and permits are obtained.

- Upcoming cabinet area submittals include **cabinets 37, 40, 16, 19** and **38**.
- Currently approximately **85%** of all required network and cabinet areas have been reviewed and approved by the Lehi City review process.
- All remaining network and cabinet areas are anticipated to be submitted for city review in the next couple of weeks.

SHELTER DESIGNS AND CONSTRUCTION

- The site work and foundation construction for **shelter 3** is in progress. Once complete the building will be installed at the site.

RING AND DISTRIBUTION FIBER CONSTRUCTION

- Construction for the backbone ring section between **shelters 1 and 3** is underway and progressing.
- Required specialty fiber splicing materials have caused a short delay in fiber splicing the backbone ring section between **shelters 2 and 4**. We anticipate being able to complete this fiber splicing in the next couple of weeks. Once fiber splicing for this section is complete, **shelter 4** equipment can be turned up and activated on the network.
- Construction for **cabinets 8, 10A, 10B, 4A, and 4B** are in progress. Once construction is complete and fiber is placed, all locations within these cabinet boundaries may receive service. Notifications to the citizens informing them of service availability will be given at that time.
- Fiber blowing and splicing for **cabinet 9** is under way. Customers located within this cabinet area will be able to sign up for service next week.
- Construction for **cabinets 2, 3A, 3B, 13A, and 13B** will begin in the upcoming weeks.
- Communication with citizens is in progress where cabinet areas will soon begin construction.

Aerial make ready work by Lehi Power has been completed for the cabinets that are currently under construction. Additional power make ready work in other cabinet areas will begin in upcoming weeks.

Joint use telecommunications make ready work in all cabinet areas is intended to be completed during the Lehi Fiber aerial installation.

CUSTOMER INSTALLATIONS

Cabinet Area 5

- There are currently **99** residents who have completed the sign up process in cabinet area 5.
- Approximately **19%** of available locations in cabinet area 5 have subscribed for service.



Cabinet Area 18

- There are currently **151** residents who have completed the sign up process in cabinet area 18.
- Approximately **31%** of available locations in cabinet area 18 have subscribed for service.

Cabinet Area 7

- There are currently **95** residents who have completed the sign up process in cabinet area 7.
- Approximately **18%** of available locations in cabinet area 7 have subscribed for service.

MARKETING/PUBLIC RELATIONS

GREAT NEWS!

Cabinet area 9 is almost ready for customers! Working closely with Lehi City, we have reached out to residents in the area through mailers, emails, social media, and updates on lehi.fibertomycity.com.

DEMAND AGGREGATION

As of October 20, 2023, the demand aggregation platform reached a total of **7,949** unique addresses registered within city limits. The current network take rate is **26.67%**. This includes all customers who have signed up for service and are either active or pending.

FIBER OPEN HOUSE

Lehi hosted a fiber open house for residents to learn more about the network. Our team was excited to help with various assets as well as coordinate internal teams to represent Strata and help answer residents' questions.

HALLOWEEN CAMPAIGN

This month the marketing team collaborated with the Lehi City team to create a Halloween campaign. The campaign encompasses various elements, including a targeted email campaign and a couple of social media assets.