



**strata**  
NETWORKS

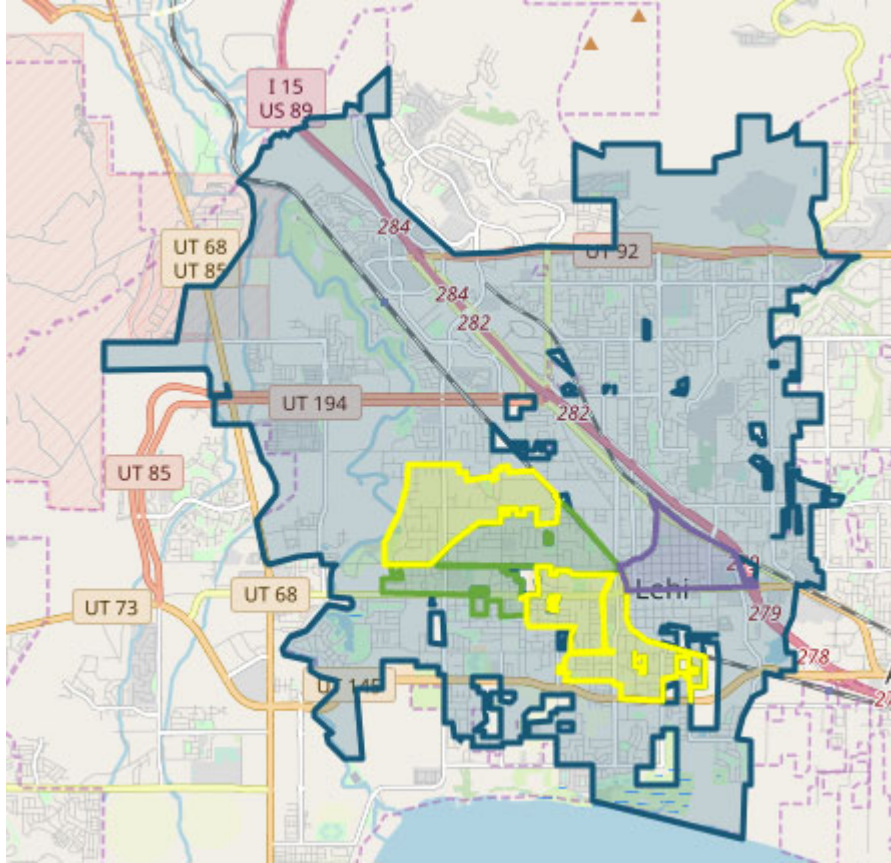


# LEHI CITY FIBER NETWORK MONTHLY UPDATE

August 2023



## LEHI FIBER TO MY CITY MAP



■ Lehi City  
■ Final Design and Planning  
■ Construction in Progress  
■ Fiber Ready – Contact ISP

### PROJECT OVERVIEW

#### NOTICE TO PROCEED

17 May 2022

#### DEMAND AGGREGATION LAUNCH

8 July 2022

#### GROUNDBREAKING CEREMONY

6 September 2022

#### SUBSTANTIAL COMPLETION

17 May 2025

#### COMPLETED BORING

Approx. 9,500 feet

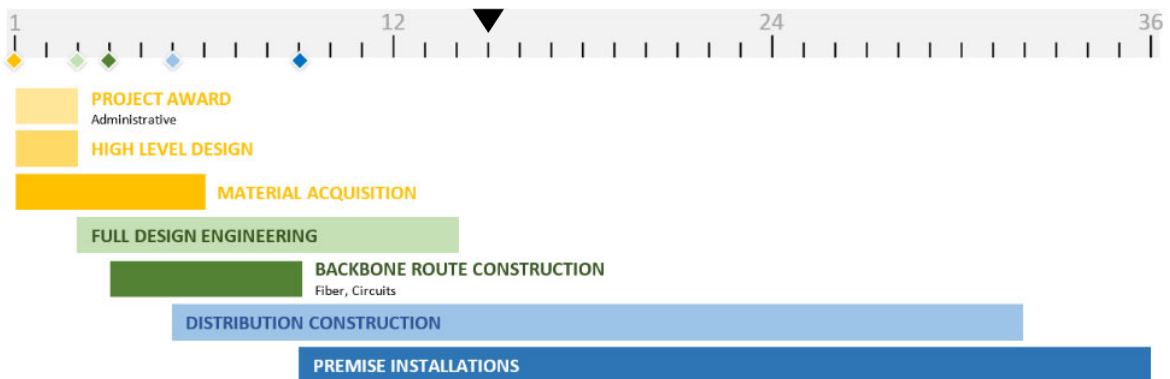
#### COMPLETED MICROTRENCHING

Approx. 58,510 feet

#### COMPLETED FIBER PLACEMENT

Approx. 161,900 feet

## 36-MONTH PROJECT TIMELINE





## ENGINEERING, CONSTRUCTION and NETWORK OPERATIONS

### MID-LEVEL DESIGN

Field data collection is approximately **99% complete** for the entire project.

Mid-level design reviews for **cabinet areas 33, 36, and backbone feeder route 3 to 1** will take place in the next couple of weeks.

### LOW-LEVEL DESIGN AND CONSTRUCTION DOCUMENTS

*Construction drawings for cabinet areas will continue to be submitted on a once per week basis for city review. Cabinet areas and projects will be scheduled to start construction after reviews are completed and permits are obtained.*

- Upcoming cabinet area submittals include **cabinets 20, 36, 32, and 6**.
- Currently approximately **51%** of all required network and cabinet areas have been reviewed and approved by the Lehi City review process.

### SHELTER DESIGNS AND CONSTRUCTION

- **Shelter 4** has been placed and installed. Power and natural gas service installations are currently in progress.
- Construction for **shelter 3** is in progress. The site work and foundation has begun. The shelter 3 building fabrication is near completion.

### RING AND DISTRIBUTION FIBER CONSTRUCTION

- Construction for backbone ring section between **shelters 2 and 4** is near completion. Fiber blowing and splicing will commence in the upcoming weeks.
- Construction for **cabinets 9, 7, and 8** is nearing completion. Once construction is complete and fiber is placed, all locations within these cabinet boundaries may receive service. Notifications to the citizens informing them of service availability will be given at that time.
- Communication with citizens is in progress where cabinet areas will soon begin construction.

Aerial make ready work by Lehi Power is complete in **cabinet areas 18, 9, 11, 7, 8, 15A, and 15B**, and is in progress in **cabinet area 10**. Additional power make ready work in other cabinet areas will begin in upcoming weeks.

Joint use telecommunications make ready work in all cabinet areas is intended to be completed during the Lehi Fiber aerial installation.

### CUSTOMER INSTALLATIONS

#### *Cabinet Area 5*

- There are currently **89** residents who have completed the sign up process in cabinet area 5.
- Approximately **18%** of available locations in cabinet area 5 have subscribed for service.

#### *Cabinet Area 18*

- There are currently **120** residents who have completed the sign up process in cabinet area 18.





- Approximately **24%** of available locations in cabinet area 18 have subscribed for service.
- Customer installations within cabinet area 18 are scheduled to begin this week. Most of the initial service connection signups within cabinet area 18 have been citizens who pre-registered within [lehi.fibertomycity.com](http://lehi.fibertomycity.com).

## MARKETING/PUBLIC RELATIONS

### GREAT NEWS!

We are excited to announce that fiber is available to customers in **cabinet area 18!** Working closely with Lehi City, we have reached out to residents in the area through mailers, emails, social media, and updates on [lehi.fibertomycity.com](http://lehi.fibertomycity.com).

### DEMAND AGGREGATION

As of August 25, 2023, the demand aggregation platform reached a total of **7,638** unique addresses registered within city limits.

### BACK-TO-SCHOOL CAMPAIGN

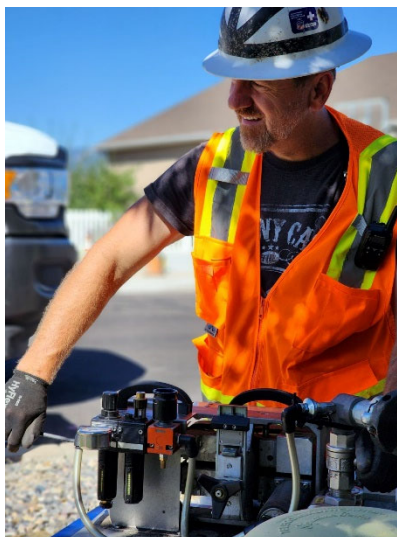
This month, the marketing team collaborated with the Lehi City team to put together a back-to-school campaign. The campaign's focus was to highlight the educational benefits of a high-speed fiber connection. The campaign encompassed various elements, including a targeted email campaign, a flyer, a postcard, and several social media assets.

### MARKET INTELLIGENCE SURVEY

In addition to our campaign efforts, our team undertook the development of a survey aimed at gaining market intelligence. This survey will play a role in future customer communications, allowing us to gain insights as to why a resident is not interested in a fiber connection at this time.



VAC UTILITY EXCAVATION



FIBER CABLE IN CONDUIT INSTALLATION



FIBER VAULT INSTALLATION