



Lehi City Update

May 31, 2023

PROJECT OVERVIEW

LEHI CITY FIBER PROJECT

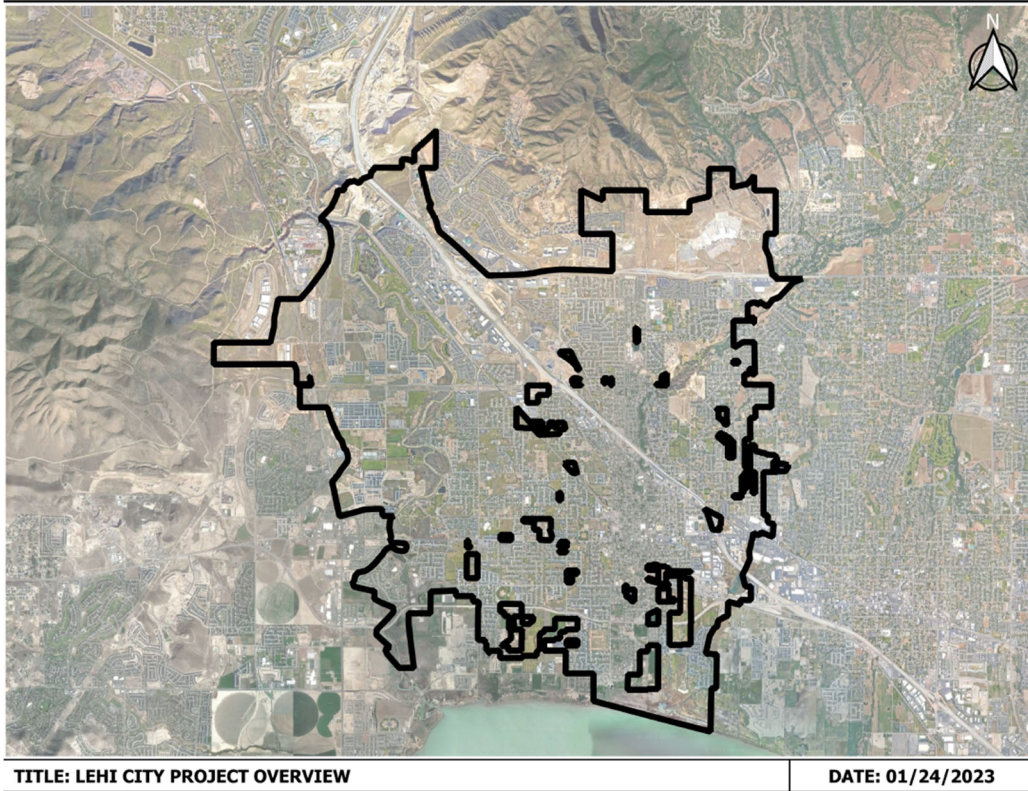


Figure 1 – Lehi City Fiber Project Overview

Notice to Proceed: 17 May 2022	Demand Aggregation Launch: 8 July 2022	Groundbreaking Ceremony: 6 September 2022	Substantial Completion: 17 May 2025
-----------------------------------	--	--	--



Mainline construction consists of mainline conduit and service terminal (i.e., pedestals and vaults) placement which primarily follows city streets within city rights-of-way. This establishes the pathway for the feeder and distribution fiber cables, and service terminals provide access to cables to allow connections to individual locations.

Next, fiber is placed in conduit using highly pressurized air to float fiber optic cable through conduit runs. Once placed, fiber fusion splicing connects fiber optic cables and service terminals into the network.

Crews construct conduit runs and place a fiber drop from the service terminal at the street to a structure at each location. Drop crews primarily place conduit via a small open trench or narrow plow. During this process, conduit may be temporarily stubbed near the home until an installation is scheduled.

Technicians will perform an installation at each location, which includes installing the Optical Network Terminal (ONT) and initial provisioning which allows each customer to receive broadband internet service with an Internet Service Provider (ISP) on the Lehi City network of their choice.

There are four shelter zones in the Lehi City Fiber Project. Design and construction began at the Zone 1 shelter, followed by segments of the network backbone ring to bring all four shelters onto the network. As the ring is established, infrastructure surrounding the ring will be built. Then the remaining areas will be prioritized according to a number of factors, including pre-registrations on lehi.fibertomycity.com.

LEHI CITY FIBER NETWORK

36-Month Project Timeline Summary

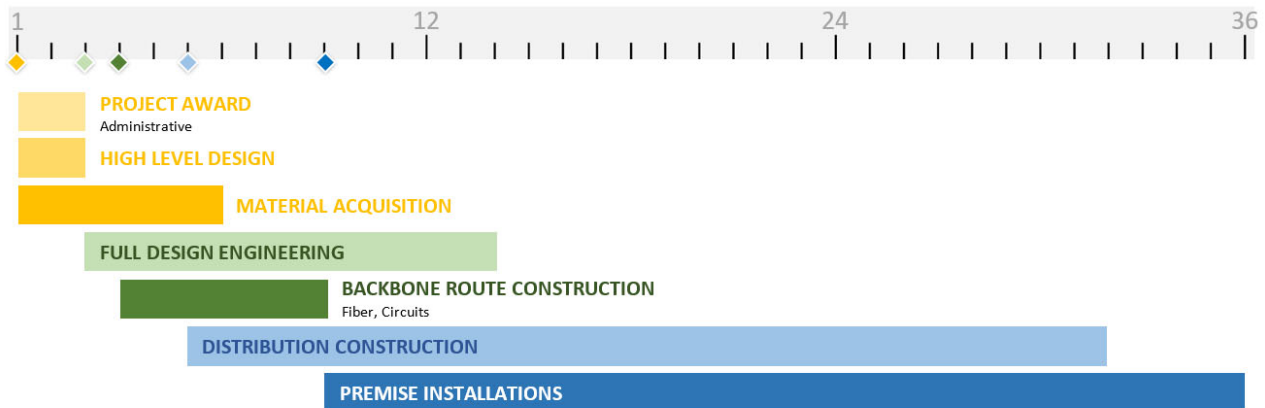


Figure 2 – Lehi City Fiber Project Timeline

ENGINEERING, CONSTRUCTION and NETWORK OPERATIONS

MID-LEVEL DESIGN

Field data collection for cabinet areas 33, 39, and 37 are in progress. Field data collection is approximately 75% complete for the entire project.

The mid-level design reviews for cabinet areas 3, 28, & 32 will take place in the next couple of weeks. Mid-level designs identify fiber needs to city infrastructure within the project area, avoid negative impacts to existing Lehi Power aerial infrastructure, and identify sensitive areas where permitting and construction have the potential to affect the initial network backbone feeder route and beginning distribution areas.

LOW-LEVEL DESIGN AND CONSTRUCTION DOCUMENTS

Construction drawings for cabinet areas will continue to be submitted on a once per week basis for city review. Upcoming cabinet area submittals include cabinets 24, 1, and 27. Cabinet areas and projects will be scheduled to start construction after the reviews are completed and permits are obtained. Currently approximately 30% of all required network and cabinet areas have been reviewed and approved by the Lehi City review process.

SHELTER DESIGNS AND CONSTRUCTION

Equipment and electronics installation has been completed for the first two shelters. Construction for shelters 3 and 4 will be starting this week.

RING AND DISTRIBUTION FIBER CONSTRUCTION

The initial transport route and connection - shelter 2 transport tie-in - was previously completed such that the Lehi Fiber network is currently fully functional.

Fiber splicing within cabinet 5 is almost complete. Construction is in progress for cabinets 18 and 9. Once construction and fiber are completed for a given cabinet area all locations within the cabinet boundary

may receive service for those citizens who choose to sign up. Notifications to the citizens informing them of service availability will occur as needed.

Construction will begin on other segments of the feeder routes in the next couple of weeks. Additional cabinets will be announced as work progresses in the upcoming weeks. Communication with citizens in the area will occur as the work begins.

Lehi Power has been progressing on aerial make ready work in cabinet areas 18, 9, and 11. Power make ready work for cabinets 9 and 18 are complete. Power make ready work for cabinet 11 is in progress. Additional power make ready work in other cabinet areas will begin in the upcoming weeks. Joint use telecommunications make ready work in all cabinet areas is intended to be completed during the Lehi Fiber aerial installation.

CUSTOMER SERVICE INSTALLATIONS

In cabinet area 5, residents have begun signing up for service. Within the first week of opening customer service signups, approximately 8% of available locations subscribed for service on the Lehi Fiber network.

Upon completing the signup process, each customer will meet with a Strata representative to schedule a fiber service drop at the customer's home, apartment, or business. Once completed, another Strata representative will meet with the customer to install the proper equipment for connectivity to the network.

Once a cabinet area is complete and ready for subscriber enrollment, residents in that area can sign up for service throughout the remainder of the project.

MARKETING/PUBLIC RELATIONS

Exciting work is being done as the first customers are joining the network. Our dedicated teams are working to address any questions about the project and continue to work very closely with Lehi City to ensure its success!

The demand aggregation platform has a record of 7,124 unique addresses registered within the city limits as of May 30, 2023.

The marketing team continues to assist Lehi City by offering assets, mailing lists, and additional support as necessary. This month our team collaborated with Lehi City to create a general overview video, as well as print resources to be used throughout various customer touchpoints. We also provided customer lists from the pre-registration platform.