



STRATA
NETWORKS®

Lehi City Update

APRIL 26, 2023



PROJECT OVERVIEW

LEHI CITY FIBER PROJECT

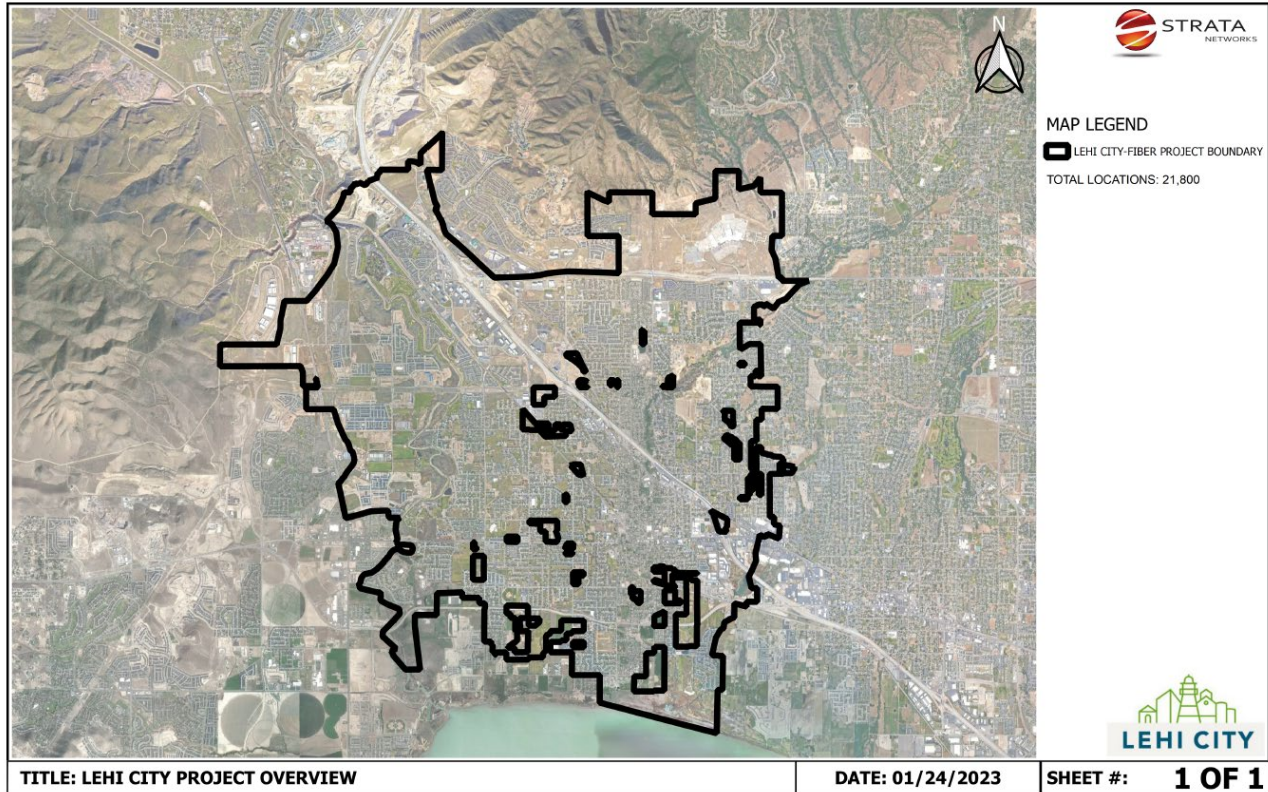


Figure 1 – Lehi City Fiber Project Overview

Notice to Proceed: 17 May 2022	Demand Aggregation Launch: 8 July 2022	Groundbreaking Ceremony: 6 September 2022	Substantial Completion: 17 May 2025
-----------------------------------	----------------------------------------------	----------------------------------------------	----------------------------------------



Mainline construction consists of mainline conduit and service terminal (i.e., pedestals and vaults) placement which primarily follows city streets within city rights-of-way. This establishes the pathway for the feeder and distribution fiber cables, and service terminals provide access to cables to allow connections to individual locations.

Next, fiber is placed in conduit using highly pressurized air to float fiber optic cable through conduit runs. Once placed, fiber fusion splicing connects fiber optic cables and service terminals into the network.

Crews construct conduit runs and place a fiber drop from the service terminal at the street to a structure at each location. Drop crews primarily place conduit via a small open trench or narrow plow. During this process, conduit may be temporarily stubbed near the home until an installation is scheduled.

Technicians will perform an installation at each location, which includes installing the Optical Network Terminal (ONT) and initial provisioning which allows each customer to receive broadband internet service with an Internet Service Provider (ISP) on the Lehi City network of their choice.

There are four shelter zones in the Lehi City Fiber Project. Design and construction began at the Zone 1 shelter, followed by segments of the network backbone ring to bring all four shelters onto the network. As the ring is established, infrastructure surrounding the ring will be built. Then the remaining areas will be prioritized according to a number of factors, including pre-registrations on lehi.fibertomycity.com.

LEHI CITY FIBER NETWORK

36-Month Project Timeline Summary

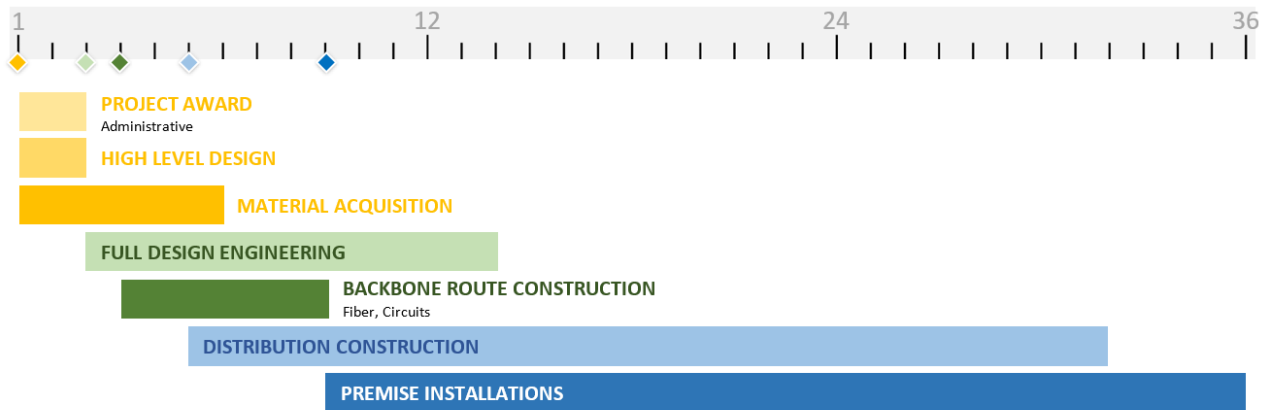


Figure 2 – Lehi City Fiber Project Timeline

ENGINEERING, DESIGN and CONSTRUCTION

Mid-Level Design

Field data collection for cabinet areas 13, 21, and 29 are in progress.

The mid-level design reviews for cabinet areas 1, 2, 4, 27, and 28 will take place in the next couple of weeks. Mid-level designs (1) identify fiber needs to city infrastructure within the project area, (2) avoid negative impacts to existing Lehi Power aerial infrastructure, and (3) identify sensitive areas where permitting and construction have the potential to affect the initial network backbone feeder route and beginning distribution areas.

Low-Level Design and Construction Documents

Construction drawings for cabinet areas will continue to be submitted on a one per week basis for city review. Upcoming cabinet area submittals include cabinets 8, 10, 26, and 15. Cabinet areas and projects will be scheduled to start construction after the reviews are completed and permits are obtained. Currently there are approximately 14 network and cabinet areas that have been reviewed and approved by the Lehi City review process.

Shelter Designs and Construction

Equipment and electronics installations for the first two shelters are being finalized. Construction for shelters 3 and 4 will be starting in the next couple of weeks.

Ring and Distribution Fiber Construction

The construction phase for the backbone between shelters 1 and 2 is approximately 95% complete. Equipment turnup has begun and will continue into next week. Placing fiber cable inside conduits (fiber blowing) will begin shortly, followed by fiber splicing.

A required permit that provides a connection of the Lehi Fiber Network to the transport fiber route has been delayed. This connection is required so that the Lehi Fiber network can connect to Points of Presence along the Wasatch Front. We are anticipating the permit to be received any day. Once obtained and work is completed and equipment connected, the Lehi Fiber network will be fully functional.

The construction phase for cabinet area 5 is approximately 99% complete. Placing fiber cable inside conduits (fiber blowing) is over 50% complete. Fiber splicing is anticipated to begin next week. Equipment turnup will begin in upcoming weeks. Once fiber and equipment turnup is completed and the transport route has been connected, all locations within the cabinet 5 boundary may receive service for those citizens who choose to sign up. Notifications to the citizens informing them of service availability will occur in the next couple of weeks.

Construction will begin next week on Cabinets 18, 9, and other segments of the feeder routes. Additional cabinets will be announced as work progresses in the upcoming weeks. Communication with the citizens in the area will occur as the work begins.

Lehi Power has been progressing on aerial make ready work in cabinet areas 18, 9, and 11. Once the aerial power and telecommunication make ready work is completed the aerial fiber can begin. Lehi Power is working with STRATA Networks to coordinate schedules and timelines to determine when the make ready work can be completed and fiber construction can begin.

MARKETING/PUBLIC RELATIONS

As of April 23, 2023, the demand aggregation platform lists 7,030 unique addresses registered within city limits. The marketing team continues to provide Lehi City with assets and mailing lists as well as additional support when needed.

This month cabinet area 18 received a construction notification mailer and email. Our team is also collaborating with Lehi to create a general overview video that helps explain the project to residents.

NETWORK OPERATIONS

STRATA Networks and Lehi City are working together to coordinate designs and efforts with upcoming city road construction and other maintenance projects. This coordinated effort has helped identify potential conflicts and resolutions for the Lehi Fiber Project and city road and maintenance projects. Additionally, Lehi Power is working with existing aerial joint use telecommunication tenants and STRATA Networks to provide aerial make ready options that may allow make ready work to be complete while new aerial Lehi Fiber facilities are being installed.