



STRATA  
NETWORKS®

# Lehi City Update

MARCH 29, 2023



# PROJECT OVERVIEW

## LEHI CITY FIBER PROJECT

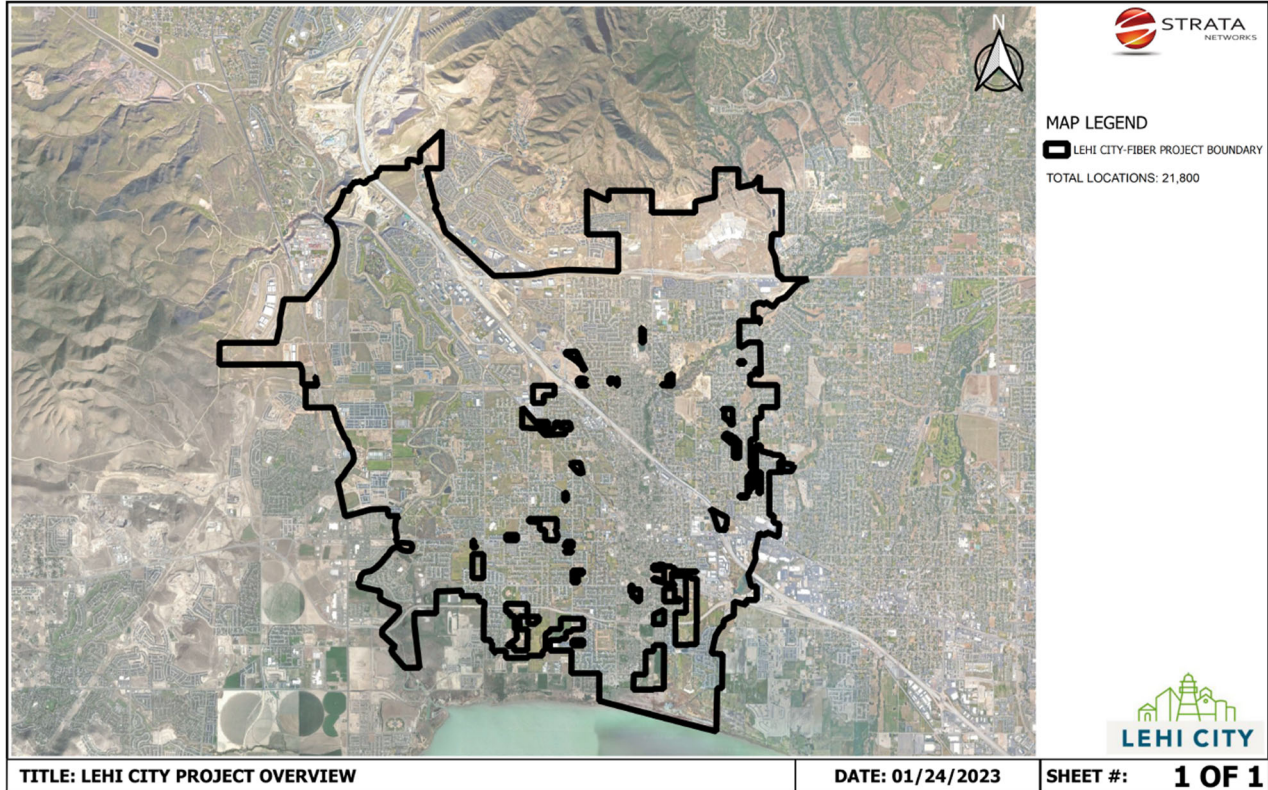


Figure 1 – Lehi City Fiber Project Overview

|                                   |  |  |  |
|-----------------------------------|--|--|--|
| Notice to Proceed:<br>17 May 2022 | Demand Aggregation<br>Launch:<br>8 July 2022 | Groundbreaking Ceremony:<br>6 September 2022 | Substantial Completion:<br>17 May 2025 |
|-----------------------------------|--|--|--|



Mainline construction consists of mainline conduit and service terminal (i.e., pedestals and vaults) placement which primarily follows city streets within city rights-of-way. This establishes the pathway for the feeder and distribution fiber cables, and service terminals provide access to cables to allow connections to individual locations.

Next, fiber is placed in conduit using highly pressurized air to float fiber optic cable through conduit runs. Once placed, fiber fusion splicing connects fiber optic cables and service terminals into the network.

Crews construct conduit runs and place a fiber drop from the service terminal at the street to a structure at each location. Drop crews primarily place conduit via a small open trench or narrow plow. During this process, conduit may be temporarily stubbed near the home until an installation is scheduled.

Technicians will perform an installation at each location, which includes installing the Optical Network Terminal (ONT) and initial provisioning which allows each customer to receive broadband internet service with an Internet Service Provider (ISP) on the Lehi City network of their choice.

There are four shelter zones in the Lehi City Fiber Project. Design and construction began at the Zone 1 shelter, followed by segments of the network backbone ring to bring all four shelters onto the network. As the ring is established, infrastructure surrounding the ring will be built. Then the remaining areas will be prioritized according to a number of factors, including pre-registrations on [lehi.fibertomycity.com](http://lehi.fibertomycity.com).

## LEHI CITY FIBER NETWORK

36-Month Project Timeline Summary

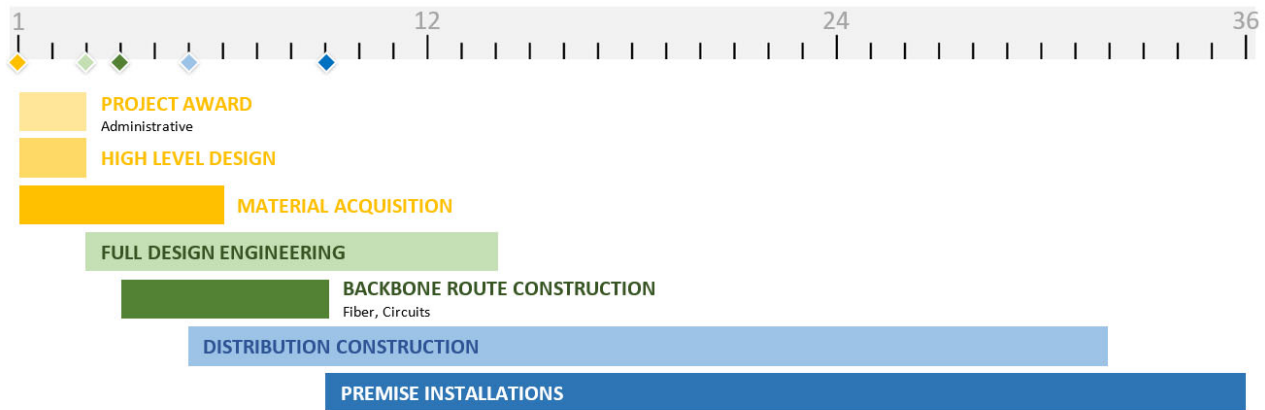


Figure 2 – Lehi City Fiber Project Timeline

## ENGINEERING, DESIGN and CONSTRUCTION

### Mid-Level Design

Field data collection for cabinet areas around the second grouping of the network backbone fiber route is continuing.

Mid-level designs (1) identify fiber needs to city infrastructure within the project area, (2) avoid negative impacts to existing Lehi Power aerial infrastructure, and (3) identify sensitive areas where permitting and construction have the potential to affect the initial network backbone feeder route and beginning distribution areas.

### Low-Level Design and Construction Documents

Construction drawings for multiple cabinet areas will continue to be submitted in the upcoming weeks. Currently STRATA Networks is submitting one cabinet area project per week for city review. This submittal trend is anticipated to continue for several months. Cabinet areas and projects will be scheduled to start construction after the reviews are completed and permits are obtained.

### Shelter Designs and Construction

Equipment installations for the first two shelters are in progress. STRATA Networks is finalizing the construction start date for final two shelters.

### Ring and Distribution Fiber Construction

The construction phase for the initial build areas will be completed in the next couple of weeks. We anticipate fiber blowing, fiber splicing, and final equipment turnup to begin in the upcoming weeks. Once fiber and equipment turnup is completed, all locations within the initial distribution boundary may receive service for those citizens who choose to sign up. Future notifications to the citizens in the area will occur as the work continues within this area.

A construction ramp up will occur in the upcoming weeks. Multiple cabinet areas and segments of backbone feeder routes are planned to begin construction. Communication with the citizens in the area will occur as the work begins.

Lehi Power has begun aerial make ready work in areas requiring aerial work. Once the aerial power and telecommunication make ready work is completed the aerial fiber can begin. Lehi Power is working with STRATA Networks to coordinate schedules and timelines for when the make ready work can be completed and the fiber construction can begin.

## MARKETING/PUBLIC RELATIONS

As of March 26, 2023, the demand aggregation platform lists 6,936 unique addresses registered within city limits. The marketing team has continued to provide Lehi City with assets and mailing lists to construction zones as well as additional support when needed. This month, a construction notification mailer and email were sent to cabinet area 9.

Currently, the marketing team is working with Lehi to determine different ways to celebrate the first resident being connected to the network.

## NETWORK OPERATIONS

### *Lehi Fiber Located Within New Developments*

STRATA Networks and Lehi City are working together to complete planning and fiber designs for Lehi Fiber facilities as part of new development projects that are within the city limits. This effort is an attempt to take advantage of construction opportunities that allow future growth of the network and that will minimize the future construction impacts in new development areas.