



STRATA
NETWORKS®

Lehi City Update

FEBRUARY 22, 2023



PROJECT OVERVIEW

LEHI CITY FIBER PROJECT

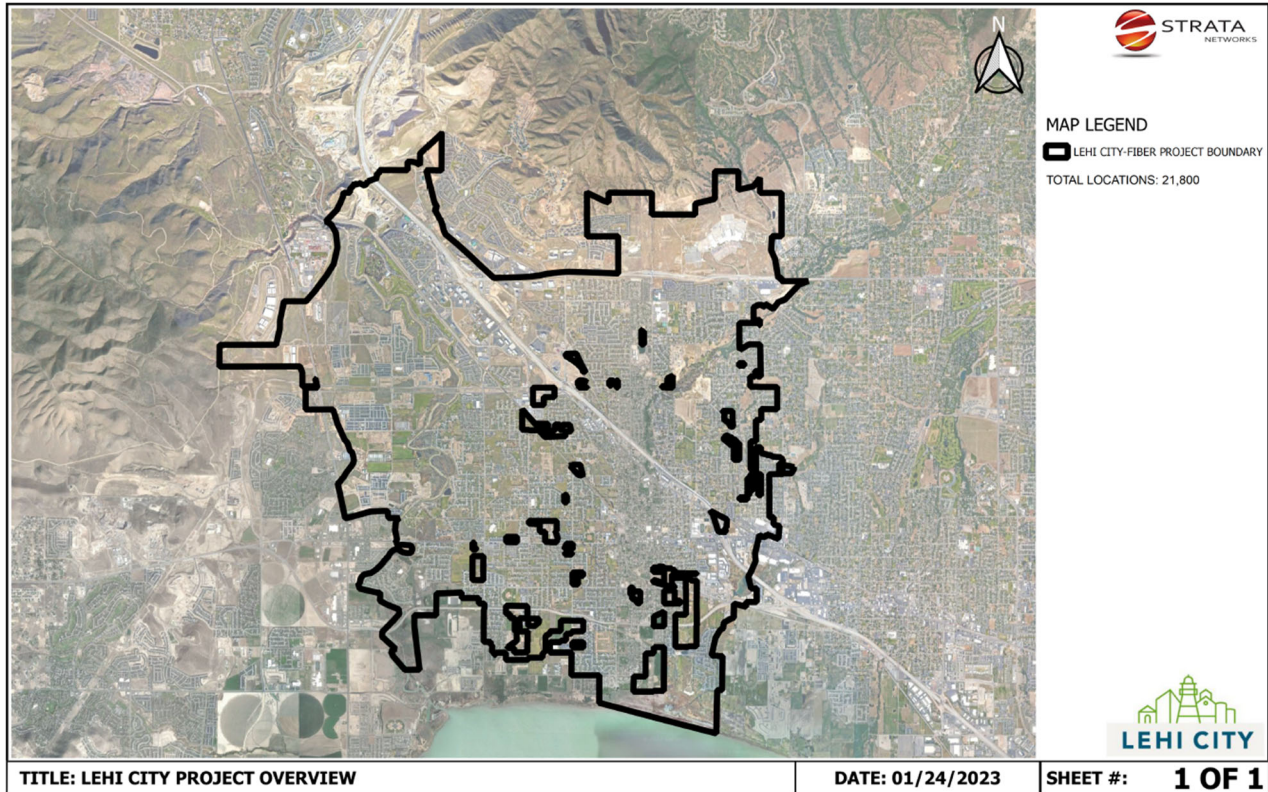


Figure 1 – Lehi City Fiber Project Overview

Notice to Proceed: 17 May 2022	Demand Aggregation Launch: 8 July 2022	Groundbreaking Ceremony: 6 September 2022	Substantial Completion: 17 May 2025
-----------------------------------	--	--	--



Mainline construction consists of mainline conduit and service terminal (i.e., pedestals and vaults) placement which primarily follows city streets within city rights-of-way. This establishes the pathway for the feeder and distribution fiber cables, and service terminals provide access to cables to allow connections to individual locations.

Next, fiber is placed in conduit using highly pressurized air to float fiber optic cable through conduit runs. Once placed, fiber fusion splicing connects fiber optic cables and service terminals into the network.

Crews construct conduit runs and place a fiber drop from the service terminal at the street to a structure at each location. Drop crews primarily place conduit via a small open trench or narrow plow. During this process, conduit may be temporarily stubbed near the home until an installation is scheduled.

Technicians will perform an installation at each location, which includes installing the Optical Network Terminal (ONT) and initial provisioning which allows each customer to receive broadband internet service with an Internet Service Provider (ISP) on the Lehi City network of their choice.

There are four shelter zones in the Lehi City Fiber Project. Design and construction will begin at the Zone 1 shelter, followed by segments of the network backbone ring that will bring all four shelters onto the network. As the ring is established, infrastructure surrounding the ring will be built. Then the remaining areas will be prioritized according to a number of factors, including pre-registrations on lehi.fibertomycity.com.

LEHI CITY FIBER NETWORK

36-Month Project Timeline Summary

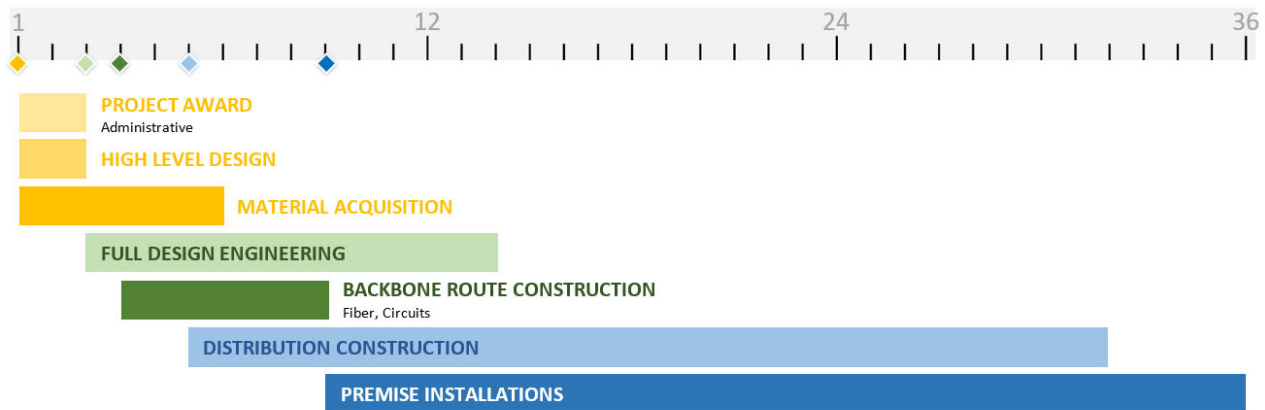


Figure 2 – Lehi City Fiber Project Timeline

ENGINEERING, DESIGN and CONSTRUCTION

Mid-Level Design

Field data collection for cabinet areas around the second grouping of the network backbone fiber route is continuing.

Mid-level designs (1) identify fiber needs to city infrastructure within the project area, (2) avoid negative impacts to existing Lehi Power aerial infrastructure, and (3) identify sensitive areas where permitting and construction have the potential to affect the initial network backbone feeder route and beginning distribution areas.

Low-Level Design and Construction Documents

Currently STRATA Networks is submitting one cabinet area project per week for city review. This submittal trend is anticipated to continue for several months. The announcement and beginning of the construction for all cabinet areas and projects will occur after the reviews are completed and permits are obtained.

Shelter Designs and Construction

The two beginning shelter buildings have been installed at their respective permanent locations. Equipment installation is in progress within those shelters. The final two shelters have been approved by the city. It is anticipated that construction will begin on these shelters once winter weather conditions are reduced.

Ring and Distribution Fiber Construction

Construction on the beginning section of backbone ring is progressing. Fiber blowing, fiber splicing, and final equipment turnup will occur after the construction phase has been completed.

Construction for the first distribution area is progressing quickly. Distribution fiber blowing, fiber splicing, and equipment turnup will occur after the construction has been completed. Once fiber and equipment turnup is completed, all locations within the serving boundary may receive service for those citizens who choose to sign up. Future notifications to the citizens in the area will occur as the work continues within this area.

Construction for additional distribution areas is anticipated to begin in the upcoming weeks.

Weekly Meetings

The weekly meetings are successful in collaborating engineering, design, and construction. Additional meetings have also been held to discuss other topics, including fiber facilities for future developments, marketing, network operations, ISP interface and onboarding, Lehi City network & IT needs, the demand aggregation tool, and communication for public questions, comments, and concerns.

MARKETING/PUBLIC RELATIONS

As of February 19, 2023, the demand aggregation platform lists 6,699 unique addresses registered within city limits.

Lehi City is continuing to highlight the fiber project on social media platforms. Recent posts include a project “roadmap” and a construction update highlighting microtrenching.

The marketing team has provided Lehi City with assets and mailing lists to construction zones. In addition, a door hanger to notify residents about construction has been provided to Lehi City. Crews will be utilizing these door hangers as they move into a new area.

NETWORK OPERATIONS

Lehi Fiber Located Within New Developments

STRATA Networks and Lehi City are working together to complete planning and fiber designs for Lehi Fiber facilities as part of new development projects that are within the city limits. This effort is an attempt to take advantage of construction opportunities that allow future growth of the network and that will minimize the future construction impacts in new development areas.