

**We LOVE our Seniors!**

## **Location**

123 North Center Street  
Lehi, UT 84043  
P 385.201.1065

## **Hours**

Monday-Friday  
9:00 am - 1:00 pm

## **Website**

[www.lehi-ut.gov/recreation/seniors](http://www.lehi-ut.gov/recreation/seniors)

[www.facebook.com/LehiSeniorCenter](https://www.facebook.com/LehiSeniorCenter)

It's true! We love seeing you at lunch each day. We love laughing and cheering during Bunco. We love going on trips and visiting new places with you. We love line dancing or doing Tai Chi, and so much more. We especially love getting to know you, talking and sharing with you, and seeing your smiles! We love our Seniors!

**FEBRUARY 2023**

## OFFERINGS!

### Valentine's Day

*Tuesday, February 14 2023*  
 Make plans for you and your sweetheart to join us for a wonderful Valentine's Day lunch and frost some cookies.  
 Tuesday, February 14, 2023  
 We will start after our valentine meal at 12:00p.m.

**Must sign up by February 10**  
 Fee: \$3 donation suggested for meal



**CAROL**  
 HOKANSON  
 GUITAR AND YODELING  
 12:00PM DURING LUNCH  
 WEDNESDAY, FEBRUARY 1ST AND 8TH



### Bunco Bash

Wednesday, February 9  
 12:30 p.m. at the Senior

Center Join us for a great game of Bunco. It's a fun and easy game to learn. Bunco can be played in teams or as individuals.

Seniors coming are encouraged to bring their own set of 3 dice. Score cards (and dice, if needed) will be provided. Prizes are available for participants. Please have a current Senior Center Membership to participate.

### Monday Movie Mania!

Monday, February 13

12:30 p.m. at the Senior Center.

This month we will watch, "The Lost Valentine." A reporter (Jennifer Love Hewitt) seeks the truth about a woman's (Betty White) husband (Billy Magnussen), a pilot who never returned from duty in World War II.

A small popcorn or treat will be provided during the movie.

Enjoy the show!!!



# ANNOUNCEMENTS

## LEHI SENIOR CENTER TRIP



Monte L. Bean  
**Life Science Museum**  
College of Life Sciences  
BRIGHAM YOUNG UNIVERSITY



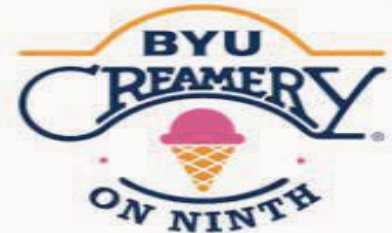
**Monte L. Bean  
Museum, Tour,  
& Dinner at  
BYU Creamery**  
(Creamery is pay  
on your own)

**1:30pm – 5:30pm**

**\$5 for Members**

**Wednesday,  
February 22, 2023**

Call Lacey (385) 201-2349 or stop by  
the Lehi Senior Center to reserve a spot.  
Must sign up and pay to reserve a spot.



### Dates Closed:

We will be closed and no meals  
will be served on the following  
day:

**Monday, February 20**



**Blood pressure Clinic 2/3/2023**

**11:00-12:00**

**Sponsored by Dignity Health**





# HAPPY BIRTHDAY



## February Birthday Celebration

Friday, February 24

On the 4th Friday of the month (unless otherwise noted), we have a small birthday celebration for all those who had a birthday during the month!

We will sing to celebrate during lunch.

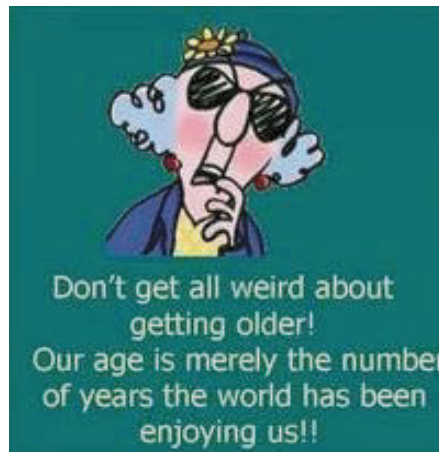
Reserve your lunch for *Friday, February 24* and enjoy a sweet treat. *Be sure to call ahead to reserve your lunch before Thursday at noon.*



If we've missed your birthday, let us know so we can update our records. Have a great month!



Carrie Cummings	February 1
Gary Lewis	February 3
Marge Hopkins	February 5
Tom Copeland	February 6
Richard Clark	February 7
Kathy Nelson	February 14
Keith Sadler	February 14
Reed Wade	February 15
Ben White	February 16
Violet Henry	February 17
JoAnn Herbert	February 18
Carma Hampton	February 25
Glen Smith	February 26
Tina Bevard	February 26
Mac Powell	February 26



Growing old happens.  
Growing up is optional.



Time to renew your membership for 2023.

For just \$5, you can continue to participate in all the fun at the Senior Center. Just a reminder, your yearly membership covers a full calendar year.

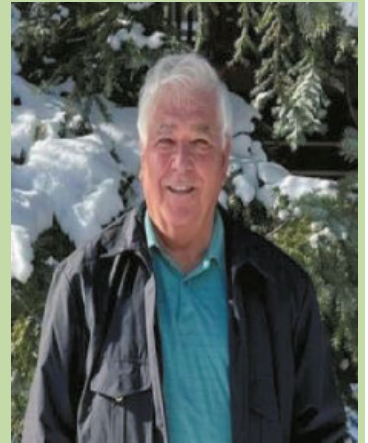
## SENIOR SPOTLIGHT



### Kevin Woodruff

- Born: Brigham City UT, now lives in Lehi, UT
- Birthday 11/9 • Favorite Food: Sushi • Kids: 5
- Hobbies: boating, fishing, four-wheeling
- Favorite Season: Fall, for the deer hunt.
- Advice for peers: Come to the center and have some fun!

Kevin is so fun, and always up for a new adventure. We are excited he loves Tuacahn and can't wait for June.



[www.lehi-ut.gov/recreation/seniors/](http://www.lehi-ut.gov/recreation/seniors/) | 5

# NEVER MISS OUR NEWSLETTER!

## SUBSCRIBE

Have our  
newsletter  
emailed to  
you every  
week.



Visit

[www.mycommunityonline.com](http://www.mycommunityonline.com)

SUPPORT OUR  
ADVERTISERS!

## ADVERTISE HERE

to reach your community



## Call 800-950-9952





FEBRUARY 2023

MONDAY	TUESDAY	WEDNESDAY	THURSDAY	FRIDAY
 3 Malibu Chicken Loaded Mashed Potatoes Green Beans Fruit Cocktail Roll 	<p><b>MEALS MUST BE CALLED INTO THE CENTER BY NOON THE DAY BEFORE TO RESERVE A MEAL 385-201-1065</b></p>	1 Sweet & Sour Chicken Steamed White Rice Stir Fry Vegetables Apple Fortune Cookie 	2 Country Fried Steak Mashed Potatoes/Gravy Mixed Vegetables Orange Roll 	3 Salisbury Steak Mashed Potatoes/Gravy Mixed Vegetables Roll Fruit Fluff / Cottage Cheese 
6 Swedish Meatballs / Rice Tossed Salad w/Dressing Carrots Roll / Apple Crisp 	7 Roasted Turkey Mashed Potatoes / Gravy Green Beans Roll Mandarin Orange 	8 Shepherd's Pie Tossed Salad w/ Dressing Carrots Pears 	9 Kalua Pork Hawaiian Rice Black Beans Pineapple Roll / Brownie 	10 Garlic Roast Beef Mashed Potatoes/Gravy Jello w/ Fruit Peas Roll 
13 Teriyaki Chicken Bowl Brown Rice Broccoli Fruit Cocktail Roll 	<p><b>VALENTINES DAY</b> 14                      Cheesy Sausage Pasta                      Green Beans                      Applesauce                      Roll                      Cookie Bar  </p>	15 Three Bean Chili / Cheese California Blend Vegetables Corn Chips Peaches Cookie Bar 	23 Chicken Wrap Italian Pasta Salad Pickle Peaches 	17 Santa Fe Shredded Turkey on Brown Rice Black Beans Corn / Roll Orange <p><b>BIRTHDAY CELEBRATION</b></p>
20 <p><b>Presidents' Day</b></p> 	21 Honey Baked Ham Loaded Mashed Potatoes Beets Applesauce Corn Bread 	22 Chicken Pot Pie w/ Biscuit Tossed Salad w/ Dressing Mandarin Oranges/Cookie 	<p><b>ALTERNATE MEALS</b></p> <p>Feb 1-3 Cr of Potato                      Feb 6-10 Chef's Salad                      Feb 13-14 Vegetable Beef                      Feb 15-17 Chicken Noodle                      Feb 21-24 Chef's Salad</p>	24 Feb 27-28 Cr of Broccoli  <p><b>TURKEY SANDWICH W/ SOUP</b></p>
27 Creamed Chicken / Rice California Vegetables Pineapple Roll 	28 BBQ Pulled Pork Loaded Mashed Potatoes Corn Bread Corn Apple / Roll 			



# ACTIVITIES CALENDAR

TO REGISTER FOR  
ACTIVITIES CALL LACEY:  
385-201-2349



## ACTIVITIES CALENDAR FEBRUARY 2022



MONDAY	TUESDAY	WEDNESDAY	THURSDAY	FRIDAY
<p>COMING JUNE: <b>TUACAHN TRIP!</b> June 11-13 More info to come!</p>		<p>1 Winning Wednesday</p> <p>Carol 12:10pm Yodeling and Guitar</p>	<p>2</p>	<p>3</p> <p>Line Dance - 10:00am Bingo 11:30am</p> <p>Be Mine</p> <p>Blood Pressure Clinic 11-12pm Sponsored by Dignity Health</p>
<p>6</p> <p>Tai Chi 9:30 - 10:30am Adv. Watercolor 9:30am</p>	<p>7</p> <p>Watercolor 9:30am Crochet Club 10:15am Bingo 11:30am</p>	<p>8</p> <p>Winning Wednesday</p> <p>Carol Yodeling 12:10pm BUNCO BASH 12:30pm</p>	<p>9</p> <p>Be Mine</p> <p>Last day to sign up for Cupid craze</p>	<p>10</p> <p>Line Dance - 10:00am Bingo 11:30am</p>
<p>13</p> <p>Tai Chi 9:30 - 10:30am Adv. Watercolor 9:30am</p> <p>Monday Movie 12:30pm "The Lost Valentine"</p>	<p>14</p> <p>Watercolor 9:30am Crochet Club 10:15am Bingo 11:30am</p> <p>Cupid Craze 12:30pm</p>	<p>15</p> <p>Winning Wednesday</p>	<p>16</p>	<p>17</p> <p>Line Dance - 10:00am Bingo 11:30am</p> <p>Sign up for Museum and Creamery due!</p>
<p>20</p> <p>SENIOR CENTER CLOSED</p>	<p>21</p> <p>Crochet Club 10:15am Bingo 11:30am</p>	<p>22</p> <p>Winning Wednesday</p> <p>Bean Museum and Creamery 1:30pm</p>	<p>23</p>	<p>24</p> <p>Line Dance - 10:00am Bingo 11:30am</p> <p>Birthday Celebration</p>
<p>27</p> <p>Tai Chi 9:30 - 10:30am Adv. Watercolor 9:30am</p>	<p>28</p> <p>Watercolor 9:30am Crochet Club 10:15am Bingo 11:30am</p>			<p>happy Valentine's day</p>

## WEEKLY CLASSES & CLUBS

***\*Classes with a red asterisk require call-ahead registration***

Lunch <sup>*</sup> <i>Call by noon the day before to make a reservation</i>	Monday - Friday (must reserve) Served at Noon.
Tai Chi Class	Mondays 9:30am
Watercolor Class <sup>*</sup>	<ul style="list-style-type: none"> <li><i>Tuesday, February 7, and 14 (From January's session)</i></li> <li><i>February's session: Feb 28 March 7, 14/22 (4 sessions per class) 9:30am</i></li> </ul> <p>Advanced Watercolor also available. Let us know if you are interested or have questions.</p>
Crochet Club	Tuesdays 10:15am
Line Dancing	Fridays 10:00am
BINGO	Tuesday 11:30am Friday 11:30am
Bunco Bash	<i>Wednesday, February 8, 12:30pm</i>
Monday Movie Mania	<i>Monday, February 13, 12:30pm</i> "The Lost Valentine"



## GAMES

### Valentine's Day WORD SCRAMBLE

B F Y E R R A U R D M I A E R

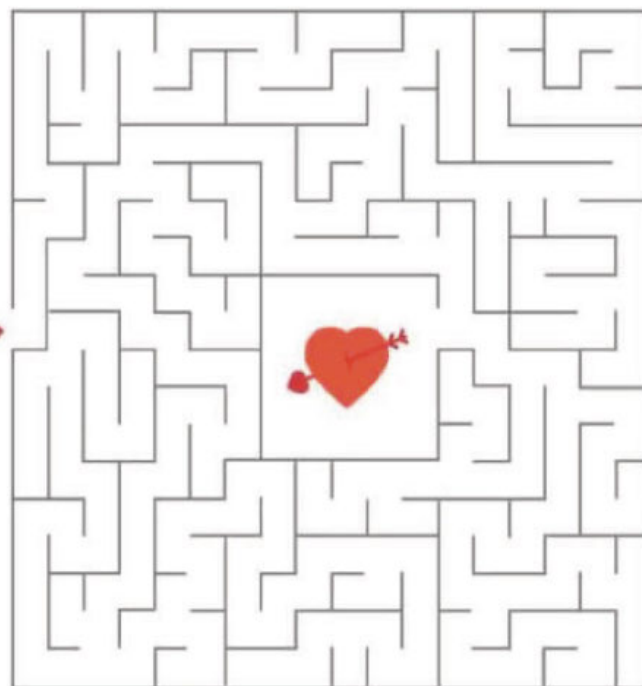
H R T A E I T A N L E E N V

A N D C Y N D O I M A D

S E S O R P O M E D P U C I

Happy Valentine's Day!

START  
HERE



[www.lehi-ut.gov/recreation/seniors/](http://www.lehi-ut.gov/recreation/seniors/) | 9

### LET'S GROW YOUR BUSINESS

Advertise in our Newsletter!

**CONTACT ME**  
**Brett Reineck**

[breineck@lpicommunities.com](mailto:breineck@lpicommunities.com)

(800) 950-9952 x2511

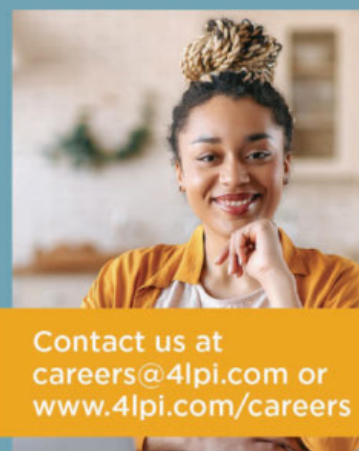
### WE'RE HIRING!

AD SALES EXECUTIVES



BE YOURSELF.  
BRING YOUR PASSION.  
WORK WITH PURPOSE.

- Paid training
- Some travel
- Work-life balance
- Full-Time with benefits
- Serve your community



Contact us at  
[careers@4lpi.com](mailto:careers@4lpi.com) or  
[www.4lpi.com/careers](http://www.4lpi.com/careers)

## SUPPORT OUR ADVERTISERS!



For ad info. call 1-800-950-9952 • [www.lpicommunities.com](http://www.lpicommunities.com)

Lehi Senior Citizens Center, Lehi, UT

B 4C 05-1178

## Valentine's Day Trivia

1. Who created the first heart shaped box of chocolates?
2. Who is the Greek God of love?
3. What color roses are most associated with romance, passion, and love?
4. Galentine's Day is a celebration created in what television show?
5. Who said "how do I love thee, let me count the ways?"
6. Who plays Sandra Bullock's grandmother in The Proposal?
7. From which movie is the famous quote, "As you wish?"
8. The movie Clueless was inspired by what Jane Austen novel?
9. What mammal has the largest heart of all mammals?
10. Who was Ben Savage's first ever kiss?
11. Where did Johnny Cash & June Carter meet?
12. Who wrote Leona Lewis' hit song "Bleeding Love?"
13. The song "I Just Called to Say I Love You" was written for what movie?
14. What song does Heath Ledger sing in the movie 10 Things I Hate About You?
15. How many states in the United States have cities named Valentine?
16. What is the name of Beyonce's first ever number 1 hit of her solo career?
17. Who originally wrote and recorded Whitney's "I Will Always Love You?"
18. What candy company originally created candy conversation hearts?
19. Name the two colors most associated with Valentine's Day.
20. People in what profession receive the most valentines each year?
21. What popular children's show character sings the song "I Love You?"
22. Who is the founder of the online dating site Match.com?
23. Who is the original host of the game show The Newlywed Game?
24. Leonardo DiCaprio & Clare Danes play star-crossed lovers in what movie?
25. What romance novel won the Pulitzer Prize in 1937?



# ANSWERS

## Valentine's Day Answers

- Who created the first heart shaped box of chocolates? **Richard Cadbury**
- Who is the Greek God of love? **Eros**
- What color roses are most associated with romance, passion, and love? **Red**
- Valentine's Day is a celebration created in what television show? **Parks & Rec**
- Who said "how do I love thee, let me count the ways?" **Elizabeth Barrett Browning**
- Who plays Sandra Bullock's grandmother in The Proposal? **Betty White**
- From which movie is the famous quote, "As you wish?" **Princess Bride**
- The movie Clueless was inspired by what Jane Austen novel? **Emma**
- What mammal has the largest heart of all mammals? **Blue Whale**
- Who was Ben Savage's first ever kiss? **Danielle Fishel (Topanga)**
- Where did Johnny Cash & June Carter meet? **Grand Ole Opry**
- Who wrote "Bleeding Love?" **Ryan Tedder (One Republic) & Jesse McCartney**
- The song "I Just Called to Say I Love You" was written for what movie? **Lady in Red**
- What does Heath Ledger sing in 10 Things I Hate About You? **I Love You Baby**
- How many states in the United States have cities named Valentine? **Ten**
- What is the name of Beyonce's first ever number 1 solo hit? **Crazy in Love**
- Who originally wrote & recorded "I Will Always Love You?" **Dolly Parton**
- What candy company originally created candy conversation hearts? **NECCO**
- Name the two colors most associated with Valentine's Day. **Pink and red**
- People in what profession receive the most valentines each year? **Teachers**
- What popular children's show character sings the song "I Love You?" **Barney**
- Who is the founder of the online dating site Match.com? **Gary Kremen**
- Who is the original host of the game show The Newlywed Game? **Bub Eubank**
- Leo DiCaprio & Clare Danes play lovers in what movie? **Romeo & Juliet**
- What romance novel won the Pulitzer Prize in 1937? **Gone with the Wind**



## Valentine's Day WORD SCRAMBLE

B F Y E R R A U	R D M I A E R
— <b>FEBRUARY</b> —	— <b>ADMIRER</b> —
H R T A E	I T A N L E E N V
— <b>HEART</b> —	— <b>VALENTINE</b> —
A N D C Y	N D O I M A D
— <b>CANDY</b> —	— <b>DIAMOND</b> —
S E S O R	P O M E D P U C I
— <b>ROSES</b> —	— <b>POEM</b> — <b>CUPID</b> —

[www.lehi-ut.gov/recreation/seniors/](http://www.lehi-ut.gov/recreation/seniors/) | 11

# NEVER MISS OUR NEWSLETTER!

**SUBSCRIBE**

Have our newsletter  
emailed to you every week.



VISIT **WWW.MYCOMMUNITYONLINE.COM**

## ADT-Monitored Home Security

Get 24-Hour Protection  
From a Name You Can Trust

- Burglary
- Fire Safety
- Flood Detection
- Carbon Monoxide



Authorized  
Provider

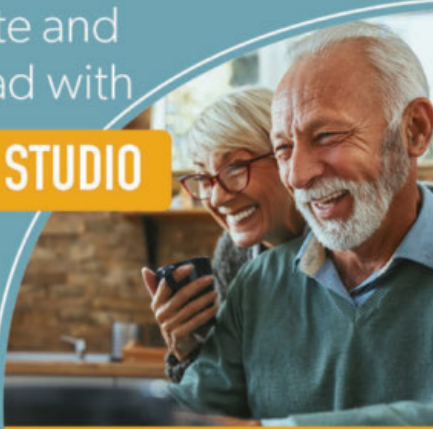
SafeStreets

833-287-3502

## Place Your Ad Here and Support our Community!

Instantly create and  
purchase an ad with

**AD CREATOR STUDIO**



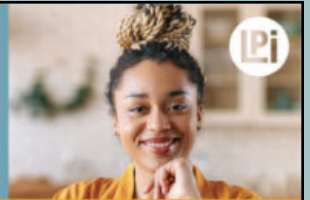
[lpicommunities.com/adcreator](http://lpicommunities.com/adcreator)

## WE'RE HIRING!

AD SALES EXECUTIVES

BE YOURSELF.  
BRING YOUR PASSION.  
WORK WITH PURPOSE.

- Paid training
- Some travel
- Work-life balance
- Full-Time with benefits
- Serve your community



Contact us at  
[careers@4lpi.com](mailto:careers@4lpi.com) or  
[www.4lpi.com/careers](http://www.4lpi.com/careers)



**FREE**  
AD DESIGN  
with purchase  
of this space

**CALL 800-950-9952**

# NEVER MISS OUR NEWSLETTER!

**SUBSCRIBE**

Have our newsletter  
emailed to you every week.



VISIT **WWW.MYCOMMUNITYONLINE.COM**



For ad info. call 1-800-950-9952 • [www.lpicommunities.com](http://www.lpicommunities.com)

Lehi Senior Citizens Center, Lehi, UT

D 4C 05-1178