



STRATA  
NETWORKS®

# Lehi City Update

DECEMBER 28, 2022



# PROJECT OVERVIEW

## LEHI CITY FIBER PROJECT

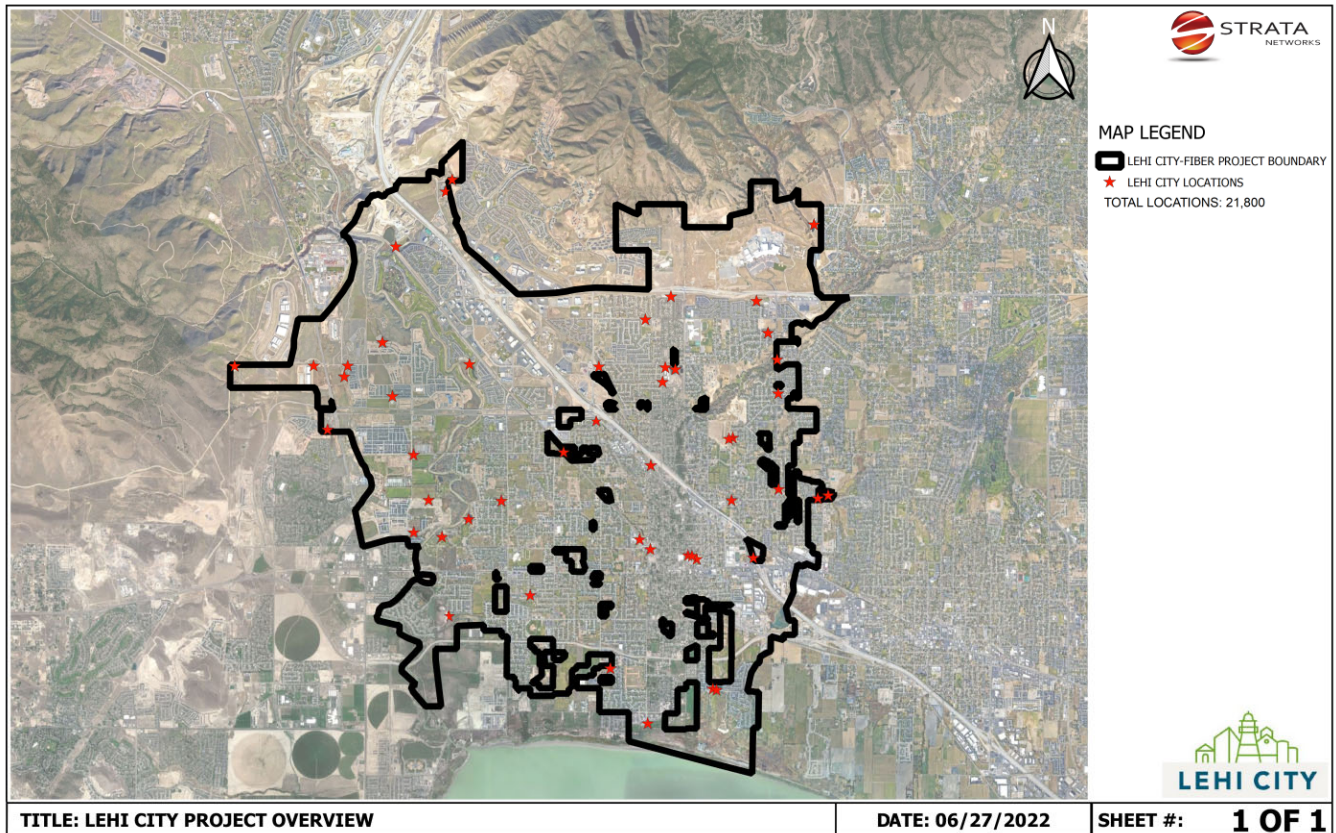


Figure 1 – Lehi City Fiber Project Overview

Notice to Proceed: 17 May 2022	Demand Aggregation Launch: 8 July 2022	Groundbreaking Ceremony: 6 September 2022	Substantial Completion: 17 May 2025
-----------------------------------	--	--	--



Mainline construction consists of mainline conduit and service terminal (i.e., pedestals and vaults) placement which primarily follows city streets within city rights-of-way. This establishes the pathway for the feeder and distribution fiber cables, and service terminals provide access to cables to allow connections to individual locations.

Next, fiber is placed in conduit using highly pressurized air to float fiber optic cable through conduit runs. Once placed, fiber fusion splicing connects fiber optic cables and service terminals into the network.

Crews construct conduit runs and place a fiber drop from the service terminal at the street to a structure at each location. Drop crews primarily place conduit via a small open trench or narrow plow. During this process, conduit may be temporarily stubbed near the home until an installation is scheduled.

Technicians will perform an installation at each location, which includes installing the Optical Network Terminal (ONT) and initial provisioning which allows each customer to receive broadband internet service with an Internet Service Provider (ISP) on the Lehi City network of their choice.



There are four shelter zones in the Lehi City Fiber Project. Design and construction will begin at the Zone 1 shelter, followed by segments of the network backbone ring that will bring all four shelters onto the network. As the ring is established, infrastructure surrounding the ring will be built. Then the remaining areas will be prioritized according to a number of factors, including pre-registrations on [lehi.fibertomycity.com](http://lehi.fibertomycity.com).

## ENGINEERING, DESIGN, and CONSTRUCTION

### *Mid-Level Design*

Field data collection for cabinet areas around the second section of the network backbone fiber route is in progress.

STRATA Networks and Lehi City are progressing with mid-level designs that (1) identify fiber needs to city infrastructure within the project area, (2) avoid negative impacts to existing Lehi Power aerial infrastructure, and (3) identify sensitive areas where permitting and construction have potential to affect the initial network backbone feeder route and beginning distribution areas.

### *Low-Level Design & Construction Documents*

Construction drawings for the beginning distribution cabinet area is under Lehi City review. Additional distribution cabinet areas will be submitted in the upcoming weeks.

### *Shelter Designs and Construction*

The two shelter building structures have been installed at their respective permanent locations. Power, gas, and equipment installation is in progress.

### *Ring and Distribution Fiber Construction*

Construction on the beginning section of the backbone ring has begun construction. Construction is scheduled to begin for the first distribution cabinet area shortly.

### *Weekly Meetings*

The weekly meetings are successful in collaborating engineering, design, and construction. Additional meetings have also been held to discuss other topics, including fiber facilities for future developments, marketing, network operations, ISP interface and onboarding, Lehi City network & IT needs, the demand aggregation tool, and communication for public questions, comments, and concerns.

## MARKETING/PUBLIC RELATIONS

As of December 18, 2022, the demand aggregation platform lists 6,406 unique addresses registered within city limits. This number varies slightly from previous reports which had been including all registrations within the Lehi City limits.

This month the marketing team has provided Lehi with a series of fiber education posts as well as a graphic that shows speeds and prices on the network. The goal of these posts is to inform residents of the benefits of fiber and promote the demand aggregation platform.

In addition, the marketing team provided Lehi a co-branding document that outlines the co-branding standards for ISPs providing services on the Lehi City Fiber Network.

## NETWORK OPERATIONS

### *Lehi Fiber Located Within New Developments*

STRATA Networks and Lehi City are working together to complete planning and fiber designs for Lehi Fiber facilities as part of new development projects that are within the city limits. This effort is an attempt to take advantage of construction opportunities that allow future growth of the network and that will minimize the future construction impacts in new development areas.