

Welcome to Willow Park

SPEED LIMIT IN THE PARK IS **10 MPH**

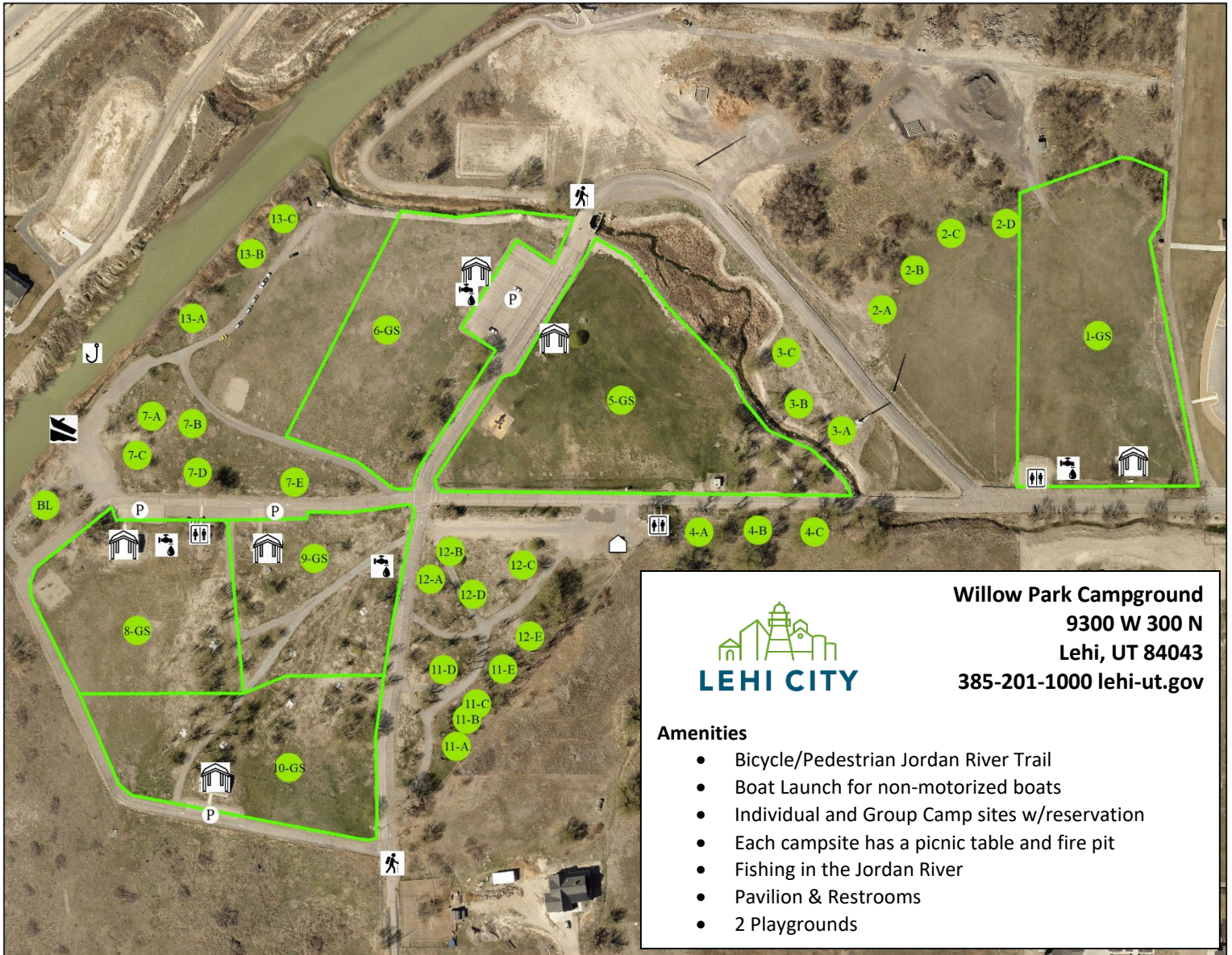
We are glad you are here! Please take a minute to read over the park rules and ensure your group follows them during your stay. These rules will be strictly enforced by the Camp Host and Lehi City Police Department. Failure to follow the rules may result in your being asked to leave, forfeiture of any refund, and/or being ineligible for future stays. If you are in need of any assistance during your stay, please feel free to call the **Camp Host at 385-271-9983**.

Willow Park Rules:

- Please check in with the Camp Host when you arrive. They will help you find your campsite or help you make a reservation if you don't already have one. **NO CASH TRANSACTION PERMITTED.** Reservations can be made on-line at <https://lehicitypavilions.sportsites.com/player#Root0>
- Check in time is 1:00 p.m.
- Check out time is 11:00 a.m.
- Campsites are available for a continuous stay of 7 days.
- Individual campsites are limited to a maximum of 10 people.
- Individual areas are allowed 2 vehicles and 1 camp trailer per site, at all times.
- **Quiet hours are from 10pm - 7am. All GENERATORS AND MUSIC MUST BE TURNED OFF, AND VOICES AND NOISE KEPT DOWN.**
- No audio systems are allowed without prior permission. All audio systems must not be audible beyond 50 feet of origin, or beyond any park boundary.
- Possession or consumption of alcohol or drugs is prohibited. Smoking is prohibited in Lehi City parks.
- No discharging of weapons, firearms, or fireworks (including firecrackers & sparklers) in the park.
- Campfires are only allowed in designated fire pits and flames must be kept low and contained. **Pallet burning and portable fire pits are not allowed. USE CLEAN WOOD ONLY.** Do not leave fires unattended.
- Absolutely **NO** cutting down of trees, brush or any other kind of vegetation.
- All pets must be kept on leashes at all times. Owners are responsible to clean up after their pets.
- No climbing on or in the trees; or on the rooftops of the restroom or pavilions.
- ATV's, golf carts, and off-road motorcycles are not allowed in the park, except as used by authorized Lehi City personnel only.
- No metal detecting allowed.
- No blow-up toys such as bounce houses, blow up slides, rock walls, dunk tanks, etc., without express permission of Lehi City.
- No golfing allowed.
- Please be courteous to all other patrons and use the access roads when leaving your area. Do not cut across other areas.

- Littering is prohibited. All garbage must be picked up and taken to the dumpsters located throughout the park.

Thank you for helping us make Willow Park a great place for everyone!



Willow Park Campground
9300 W 300 N
Lehi, UT 84043
385-201-1000 lehi-ut.gov


LEHI CITY

Amenities

- Bicycle/Pedestrian Jordan River Trail
- Boat Launch for non-motorized boats
- Individual and Group Camp sites w/reservation
- Each campsite has a picnic table and fire pit
- Fishing in the Jordan River
- Pavilion & Restrooms
- 2 Playgrounds