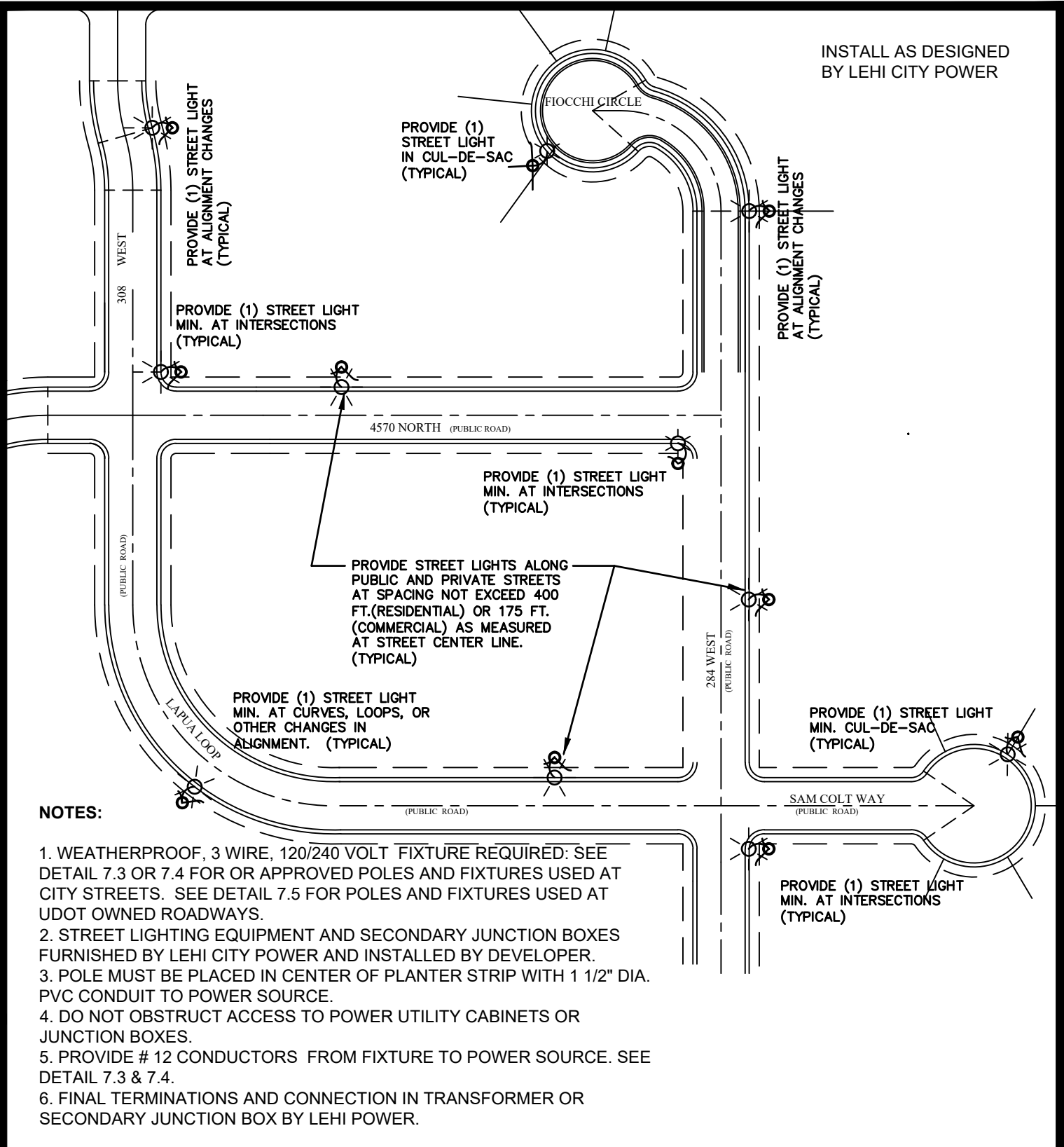


INSTALL AS DESIGNED  
BY LEHI CITY POWER



**NOTES:**

1. WEATHERPROOF, 3 WIRE, 120/240 VOLT FIXTURE REQUIRED: SEE DETAIL 7.3 OR 7.4 FOR OR APPROVED POLES AND FIXTURES USED AT CITY STREETS. SEE DETAIL 7.5 FOR POLES AND FIXTURES USED AT UDOT OWNED ROADWAYS.
2. STREET LIGHTING EQUIPMENT AND SECONDARY JUNCTION BOXES FURNISHED BY LEHI CITY POWER AND INSTALLED BY DEVELOPER.
3. POLE MUST BE PLACED IN CENTER OF PLANTER STRIP WITH 1 1/2" DIA. PVC CONDUIT TO POWER SOURCE.
4. DO NOT OBSTRUCT ACCESS TO POWER UTILITY CABINETS OR JUNCTION BOXES.
5. PROVIDE # 12 CONDUCTORS FROM FIXTURE TO POWER SOURCE. SEE DETAIL 7.3 & 7.4.
6. FINAL TERMINATIONS AND CONNECTION IN TRANSFORMER OR SECONDARY JUNCTION BOX BY LEHI POWER.



**REQUIREMENTS & STANDARDS**

**STREET LIGHT LOCATIONS  
AND SPACING**

**RESIDENTIAL & COMMERCIAL DEVELOPMENT**

DWG: **7.2**

REV. 0.00

BY: GWK/BT

DATE: 3/10/17

DRAWING LDC- DWG- 7-7-4-0007