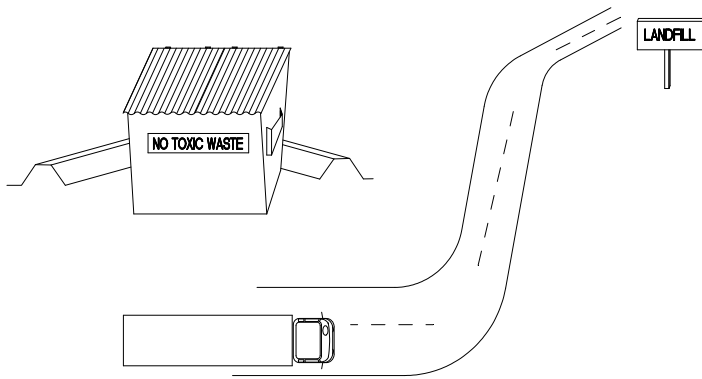


BMP: Waste Disposal

WD



OBJECTIVES

- Housekeeping Practices
- Contain Waste
- Minimize Disturbed Areas
- Stabilize Disturbed Areas
- Protect Slopes/Channels
- Control Site Perimeter
- Control Internal Erosion

DESCRIPTION:

Controlled storage and disposal of solid waste generated by construction activities.

APPLICATION:

All construction sites.

INSTALLATION:

- ▶ Designate one or several waste collection areas with easy access for construction vehicles and personnel. Ensure no waterways or storm drainage inlets are located near the waste collection areas.
- ▶ Construct compacted earthen berm (See Earth Berm Barrier Information Sheet), or similar perimeter containment around collection area for impoundment in the case of spills and to trap any windblown trash.
- ▶ Use water tight containers with covers to remain closed when not in use. Provide separate containers for different waste types where appropriate and label clearly.
- ▶ Ensure all on site personnel are aware of and utilize designated waste collection area properly and for intended use only (e.g. all toxic, hazardous, or recyclable materials shall be properly disposed of separately from general construction waste).
- ▶ Arrange for periodic pickup, transfer and disposal of collected waste at an authorized disposal location. Include regular Porto-potty service in waste management activities.

LIMITATIONS:

- ▶ On-site personnel are responsible for correct disposal of waste.

MAINTENANCE:

- ▶ Discuss waste management procedures at progress meetings.
- ▶ Collect site trash daily and deposit in covered containers at designated collection areas.
- ▶ Check containers for leakage or inadequate covers and replace as needed.
- ▶ Randomly check disposed materials for any unauthorized waste (e.g. toxic materials).
- ▶ During daily site inspections check that waste is not being incorrectly disposed of on-site (e.g. burial, burning, surface discharge, discharge to storm drain).



PIONEERING UTAH'S FUTURE

ADAPTED FROM SALT LAKE COUNTY BMP
FACT SHEET

TARGETED POLLUTANTS

- Sediment
- Nutrients
- Toxic Materials
- Oil & Grease
- Floatable Materials
- Other Waste

- High Impact
- Medium Impact
- Low or Unknown Impact

IMPLEMENTATION REQUIREMENTS

- Capital Costs
- O&M Costs
- Maintenance
- Training

- High Medium Low