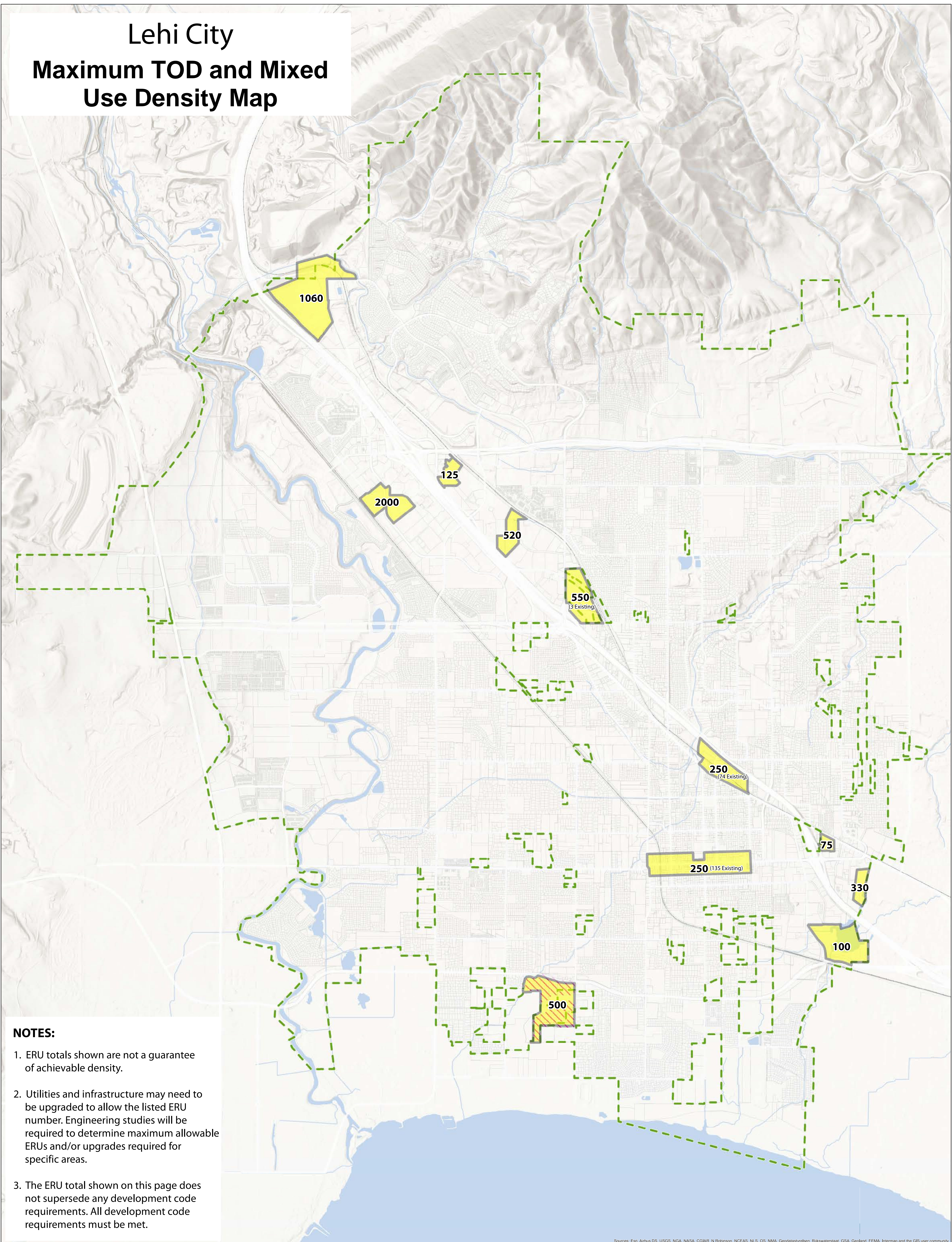


Lehi City Maximum TOD and Mixed Use Density Map



NOTES:

1. ERU totals shown are not a guarantee of achievable density.
2. Utilities and infrastructure may need to be upgraded to allow the listed ERU number. Engineering studies will be required to determine maximum allowable ERUs and/or upgrades required for specific areas.
3. The ERU total shown on this page does not supersede any development code requirements. All development code requirements must be met.