

New Developments in Lehi

1. Spring Meadow Ranches

- a. 500 North 1700 West in an R-1-22 zone
- b. 29 lot single-family residential subdivision

2. Kensington Estates

- a. Approx. 300 N and Kensington Dr in an R-1-22 zone
- b. 48 lots on 25.58 acres, 1.88 units/acre

3. IASIS Medical Center (pictured)

- a. Approx. 2000 W 3000 N in a Commercial zone
- b. 2-story hospital with 40 beds, an emergency department, and 4 operating rooms with a 3-story medical office building
- c. ~185,000 square feet with a future expansion area of 74,000 square feet



4. UCCU Office Building (pictured)

- a. Approx. 3280 N. Frontage Road in a Commercial zone
- b. 7-story office bldg. of ~60,000 square feet on 1.63 acres



5. Porsche Audi of Lehi

- a. Approx. SR-92 and Digital Drive in a Commercial zone
- b. 2.96 acre site with a ~39,000 square foot building

6. Traverse Ridge Center

- a. SE corner of SR-92 and Triumph Blvd. in a Business Park zone
- b. 3-story office building, ~70,000 square feet on 4.61 acres



7. Lone Peak Retail (pictured)

- a. 3750 North Thanksgiving Way in a Commercial zone
- b. 2 retail buildings with drive thru facilities
- c. 11,000 total square feet of floor area on 3.23 acres



8. Zaxby's (pictured)

- a. 2931 W. Maple Loop Drive in a Resort Community zone
- b. 3,654 square feet building on 0.94 acres

9. Thanksgiving Center

- a. **Hilton Home 2 Suites (pictured)**
 - i. 3051 West Club House Drive in a Resort Community Zone
 - ii. 4-story 103 room Hilton Hotel with 60,193 square feet
- b. **Thanksgiving Plaza**
 - i. 2951 W. Clubhouse Drive in a Resort Community zone
 - ii. 4,067 square foot building on 0.82 acres



10. Courtyard Marriott Hotel (pictured)

- a. 2801 W. Clubhouse Drive in a Resort Community zone
- b. 53,830 square feet on 2.4 acres
- c. 4-stories and 97 rooms



11. Traverse Medical Office (Concept) (pictured)

- a. 3900 N. Traverse Mountain Blvd. in a Planned Community zone (Highway Commercial zone in the Area Plan)
- b. 2-story medical office building with 45,080 square feet on 1.55 acres



New Developments in Lehi

12. Cresthaven Apartments (pictured)

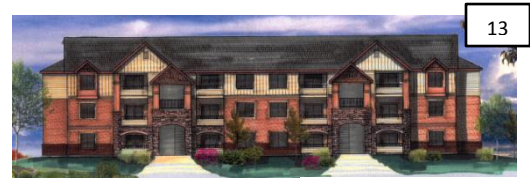
- a. 4101 North Traverse Mountain Blvd. in a Planned Community zone
- b. 344 unit high density apartment complex in the Traverse Mountain Area Plan, 3-4 story buildings
- c. 18 acres with a density of 19.1 units per acre



12

13. Seasons Apartments (pictured)

- a. 1200 West Morning Vista Road in a Planned Community zone
- b. 440 unit high density apartment project in the Traverse Mountain Area Plan, 16 4-story buildings
- c. 27.5 acres with a density of 16 units per acre



13

14. The Lofts at Ivory Ridge (pictured)

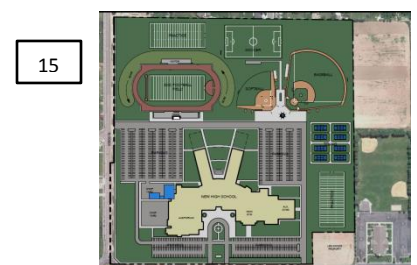
- a. Approx. 3300 North 100 West in a Mixed Use zone
- b. 2.51 acres with 17.9 units per acre
- c. Three 3-story buildings with 45 units total



14

15. New Lehi High School (pictured)

- a. 3200 North and Center Street in an A-1 zone
- b. 310,000 square foot building on 63.14 acres
- c. Mostly 1 floor, wings have 2 floors



15

16. Broadmoor Park PUD

- a. Approx. 350 South 600 East
- b. 65 single family homes and 26 townhome units

17. Mill Pond Plaza (pictured)

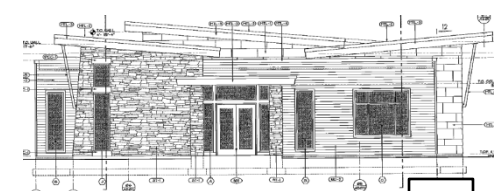
- a. 401 South 850 East in a Commercial zone
- b. 64,000 total square feet of floor area
- c. Office/warehouse/retail complex of 3 buildings



17

18. Dry Creek Structures (pictured)

- a. 951 South Mill Pond Road in a Light Industrial zone
- b. 5150 square foot office building and maintenance building with 1.51 acres of wetland areas



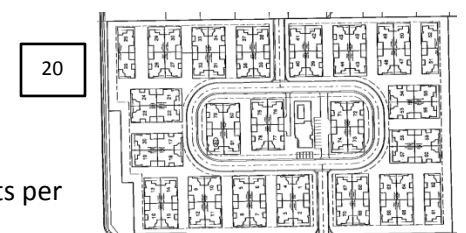
18

19. Willes Property PRD (Concept)

- a. Approx. 300 East 1630 South in R-1-22 and TH-5 zones
- b. 49 lots on 60.29 acres (21.01 developable acres)
- c. Includes a proposed pavilion and wetland interpretive center

20. Monument Park PRD

- a. 1425 South Center Street
- b. 29 lots on 17.19 acres in an R-1-22 zone



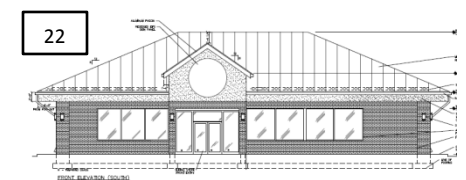
20

21. Leisure Villas PUD (Concept) (pictured)

- a. Approx. Pioneer Crossing and Center Street
- b. Senior living community of 82 units on 18.29 acres, 4.58 units per acre – currently unincorporated

22. Holiday Oil (pictured)

- a. 1.14 acres, Neighborhood Commercial zone
- b. NE corner of Pioneer Crossing and 500 West
- c. 2616 square foot convenience store with gasoline sales, with carwash



22